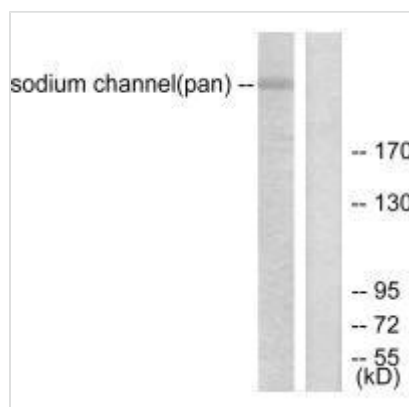




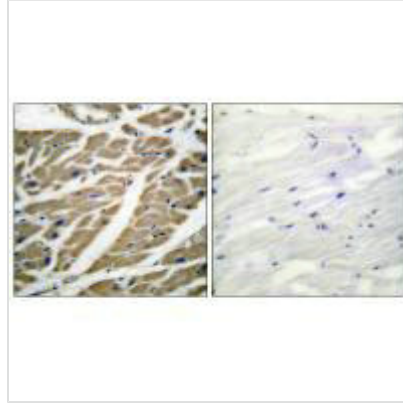
SCN5A Antibody

Product Code	CSB-PA280563
Storage	Upon receipt, store at -20°C or -80°C. Avoid repeated freeze.
Uniprot No.	Q14524
Immunogen	Synthesized peptide derived from Human sodium channel.
Raised In	Rabbit
Species Reactivity	Human,Mouse,Rat
Specificity	The antibody detects endogenous levels of total sodium channel protein.
Tested Applications	ELISA,WB,IHC;WB:1:500-1:3000,IHC:1:50-1:100
Form	Rabbit IgG in phosphate buffered saline (without Mg ²⁺ and Ca ²⁺), pH 7.4, 150mM NaCl, 0.02% sodium azide and 50% glycerol.
Purification Method	The antibody was affinity-purified from rabbit antiserum by affinity-chromatography using epitope-specific immunogen.
Clonality	Polyclonal
Alias	CIN5; HH1; SCN5A; Sodium channel protein; cardiac muscle alpha-subunit
Product Type	Polyclonal Antibody
Immunogen Species	Homo sapiens (Human)
Target Names	SCN5A

Image



Western blot analysis of extracts from HuvEc cells, using Sodium Channel-pan antibody.



Immunohistochemical analysis of paraffin-embedded human heart tissue using Sodium Channel-pan antibody.

Usage

For Research Use Only. Not for use in diagnostic or therapeutic procedures.