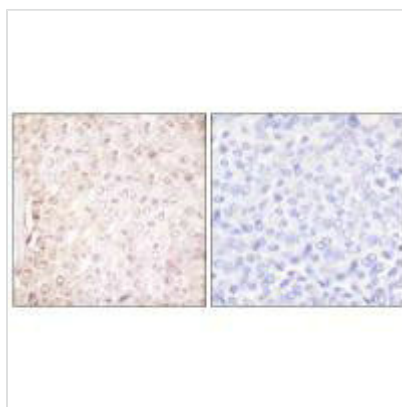




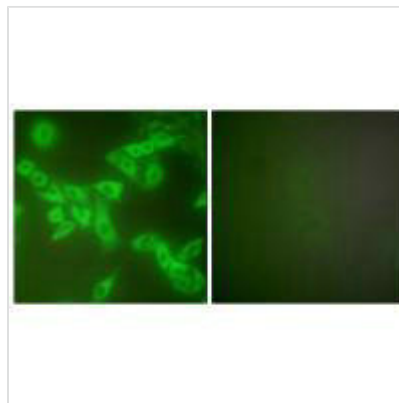
CSTB Antibody

| | |
|----------------------------|--|
| Product Code | CSB-PA920393 |
| Storage | Upon receipt, store at -20°C or -80°C. Avoid repeated freeze. |
| Uniprot No. | P04080 |
| Immunogen | Synthesized peptide derived from Human stefin B. |
| Raised In | Rabbit |
| Species Reactivity | Human,Mouse,Rat |
| Specificity | The antibody detects endogenous levels of total stefin B protein. |
| Tested Applications | ELISA,WB,IHC,IF;WB:1:500-1:3000,IHC:1:50-1:100,IF:1:100-1:500 |
| Form | Rabbit IgG in phosphate buffered saline (without Mg ²⁺ and Ca ²⁺), pH 7.4, 150mM NaCl, 0.02% sodium azide and 50% glycerol. |
| Purification Method | The antibody was affinity-purified from rabbit antiserum by affinity-chromatography using epitope-specific immunogen. |
| Clonality | Polyclonal |
| Alias | CPI-B; CST6; CYTB; EPM1; PME |
| Product Type | Polyclonal Antibody |
| Immunogen Species | Homo sapiens (Human) |
| Target Names | CSTB |

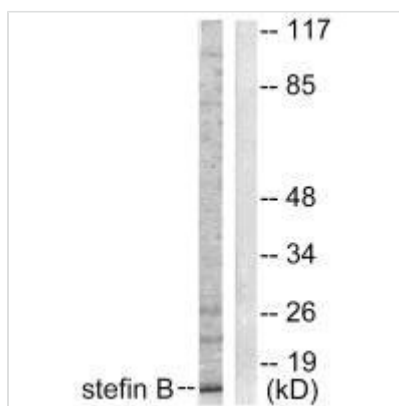
Image



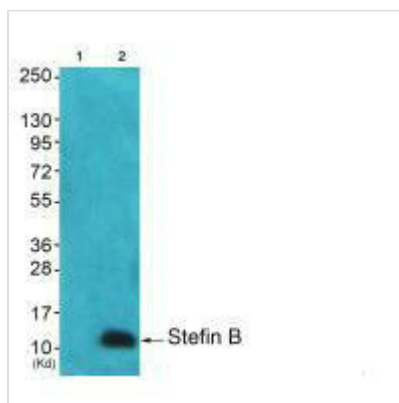
Immunohistochemical analysis of paraffin-embedded human breast carcinoma tissue using Stefina B antibody.



Immunofluorescence analysis of A549 cells, using Stefin B antibody.



Western blot analysis of extracts from A549 cells, using Stefin B antibody.



Western blot analysis of extracts from A549 cells using Stefin B antibody. The lane on the left is treated with synthesized peptide.