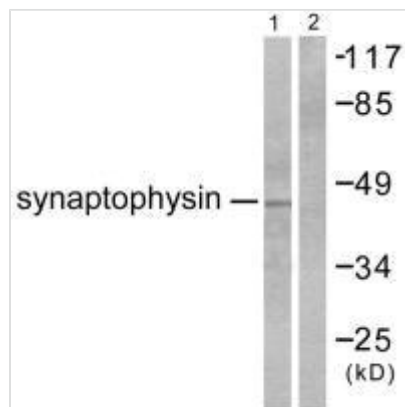




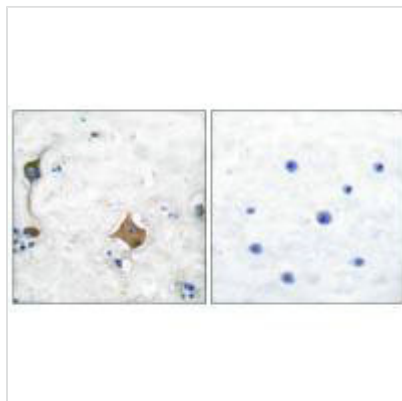
SYP Antibody

Product Code	CSB-PA290322
Storage	Upon receipt, store at -20°C or -80°C. Avoid repeated freeze.
Uniprot No.	P08247
Immunogen	Synthesized peptide derived from Human Synaptophysin.
Raised In	Rabbit
Species Reactivity	Human,Mouse,Rat
Specificity	The antibody detects endogenous levels of total Synaptophysin protein.
Tested Applications	ELISA,WB,IHC;WB:1:500-1:3000,IHC:1:50-1:100
Form	Rabbit IgG in phosphate buffered saline (without Mg ²⁺ and Ca ²⁺), pH 7.4, 150mM NaCl, 0.02% sodium azide and 50% glycerol.
Purification Method	The antibody was affinity-purified from rabbit antiserum by affinity-chromatography using epitope-specific immunogen.
Clonality	Polyclonal
Alias	major synaptic vesicle protein p38; synaptophysin;
Product Type	Polyclonal Antibody
Immunogen Species	Homo sapiens (Human)
Target Names	SYP

Image



Western blot analysis of extracts from LOVO cells, using Synaptophysin antibody.



Immunohistochemical analysis of paraffin-embedded human brain tissue using Synaptophysin antibody.