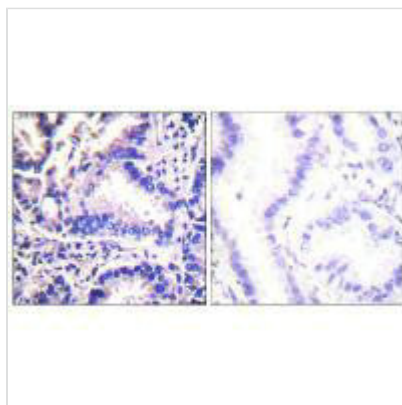




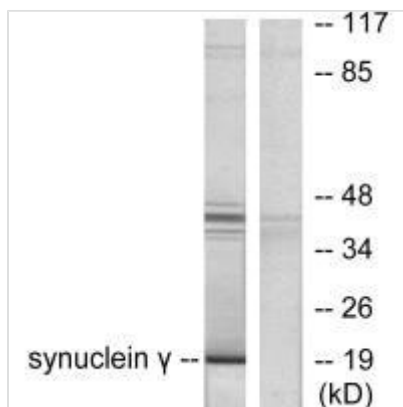
SNCG Antibody

Product Code	CSB-PA050524
Storage	Upon receipt, store at -20°C or -80°C. Avoid repeated freeze.
Uniprot No.	O76070
Immunogen	Synthesized peptide derived from Human synuclein γ .
Raised In	Rabbit
Species Reactivity	Human
Specificity	The antibody detects endogenous levels of total synuclein γ protein.
Tested Applications	ELISA, WB, IHC; WB:1:500-1:3000, IHC:1:50-1:100
Form	Rabbit IgG in phosphate buffered saline (without Mg ²⁺ and Ca ²⁺), pH 7.4, 150mM NaCl, 0.02% sodium azide and 50% glycerol.
Purification Method	The antibody was affinity-purified from rabbit antiserum by affinity-chromatography using epitope-specific immunogen.
Clonality	Polyclonal
Alias	BCSG1; PERSYN; BREAST CANCER-SPECIFIC GENE 1;
Product Type	Polyclonal Antibody
Immunogen Species	Homo sapiens (Human)
Target Names	SNCG

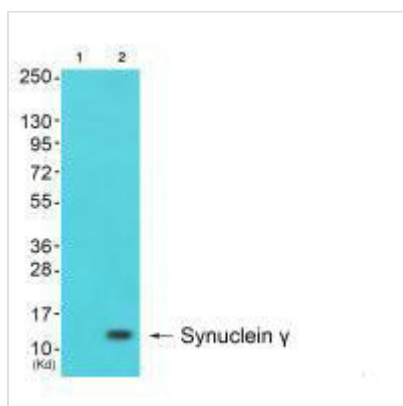
Image



Immunohistochemical analysis of paraffin-embedded human lung carcinoma tissue using Synuclein γ antibody.



Western blot analysis of extracts from HT29 cells, using Synuclein γ antibody.



Western blot analysis of extracts from cos-7 cells (Lane 2), using Synuclein γ antibody. The lane on the left is treated with synthesized peptide.