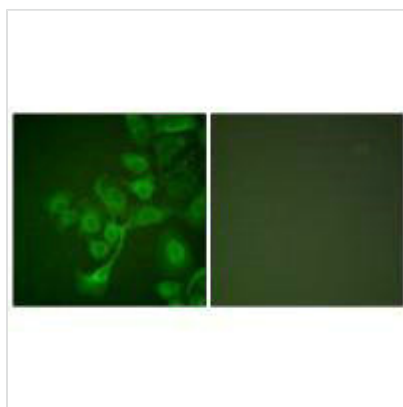




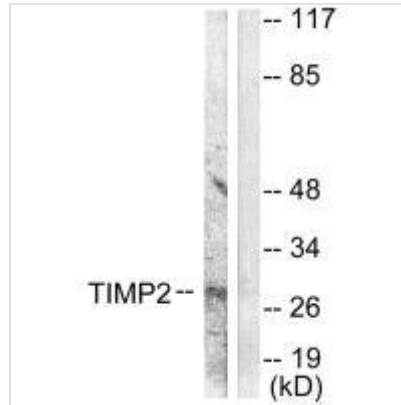
TIMP2 Antibody

Product Code	CSB-PA699608
Storage	Upon receipt, store at -20°C or -80°C. Avoid repeated freeze.
Uniprot No.	P16035
Immunogen	Synthesized peptide derived from Human TIMP2.
Raised In	Rabbit
Species Reactivity	Human,Mouse,Rat
Specificity	The antibody detects endogenous levels of total TIMP2 protein.
Tested Applications	ELISA,WB,IF;WB:1:500-1:3000,IF:1:100-1:500
Form	Rabbit IgG in phosphate buffered saline (without Mg ²⁺ and Ca ²⁺), pH 7.4, 150mM NaCl, 0.02% sodium azide and 50% glycerol.
Purification Method	The antibody was affinity-purified from rabbit antiserum by affinity-chromatography using epitope-specific immunogen.
Clonality	Polyclonal
Alias	tissue inhibitor of metalloproteinase 2;
Product Type	Polyclonal Antibody
Immunogen Species	Homo sapiens (Human)
Target Names	TIMP2

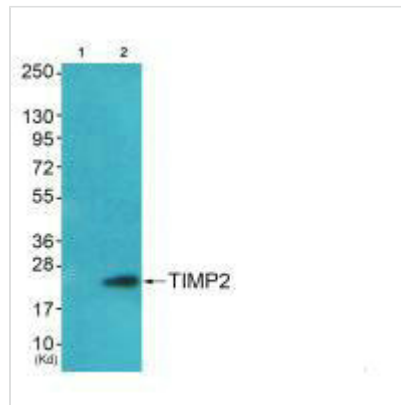
Image



Immunofluorescence analysis of A549 cells, using TIMP2 antibody.



Western blot analysis of extracts from A549 cells, using TIMP2 antibody.



Western blot analysis of extracts from HepG2 cells (Lane 2), using TIMP2 antibody. The lane on the left is treated with synthesized peptide.

Usage

For Research Use Only. Not for use in diagnostic or therapeutic procedures.