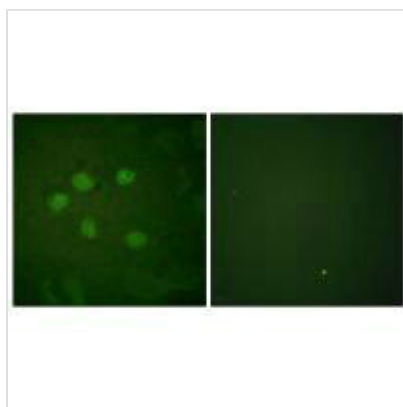




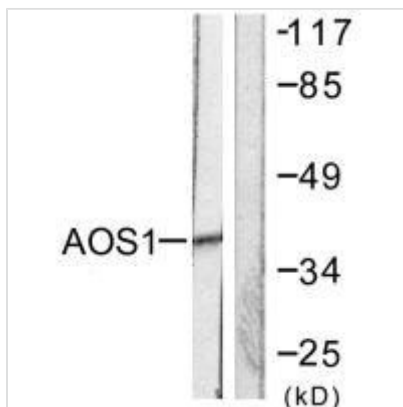
SAE1 Antibody

Product Code	CSB-PA794022
Storage	Upon receipt, store at -20°C or -80°C. Avoid repeated freeze.
Uniprot No.	Q9UBE0
Immunogen	Synthesized peptide derived from Internal of Human AOS1.
Raised In	Rabbit
Species Reactivity	Human,Mouse,Rat
Specificity	The antibody detects endogenous levels of total AOS1 protein.
Tested Applications	ELISA,WB,IF;WB:1:500-1:3000,IF:1:100-1:500
Form	Rabbit IgG in phosphate buffered saline (without Mg ²⁺ and Ca ²⁺), pH 7.4, 150mM NaCl, 0.02% sodium azide and 50% glycerol.
Purification Method	The antibody was affinity-purified from rabbit antiserum by affinity-chromatography using epitope-specific immunogen.
Clonality	Polyclonal
Alias	AOS1; HSPC140; SAE1; SUA1; SUMO-1 activating enzyme E1 N subunit
Product Type	Polyclonal Antibody
Immunogen Species	Homo sapiens (Human)
Target Names	SAE1

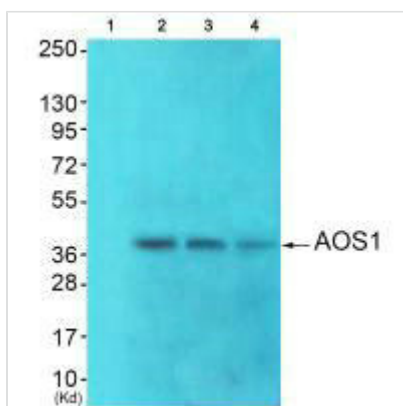
Image



Immunofluorescence analysis of HuvEc cells, using AOS1 antibody.



Western blot analysis of extracts from 293 cells, using AOS1 antibody.



Western blot analysis of extracts from Colo cells, HepG2 cells and 293 cells using AOS1 antibody. The lane on the left is treated with synthesized peptide.

Usage

For Research Use Only. Not for use in diagnostic or therapeutic procedures.