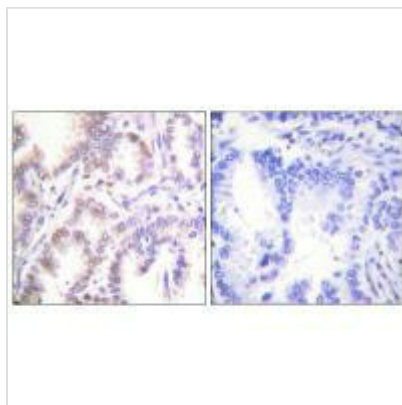




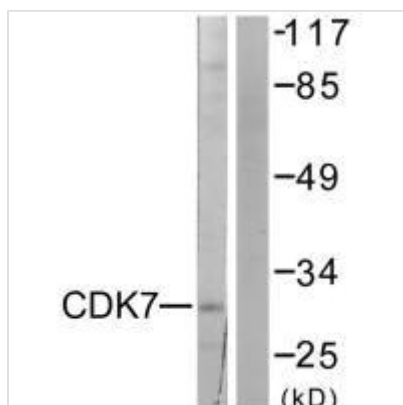
# CDK7 Antibody

<b>Product Code</b>	CSB-PA010190
<b>Storage</b>	Upon receipt, store at -20°C or -80°C. Avoid repeated freeze.
<b>Uniprot No.</b>	P50613
<b>Immunogen</b>	Synthesized peptide derived from Internal of Human CDK7.
<b>Raised In</b>	Rabbit
<b>Species Reactivity</b>	Human,Mouse
<b>Specificity</b>	The antibody detects endogenous levels of total CDK7 protein.
<b>Tested Applications</b>	ELISA,WB,IHC;WB:1:500-1:3000,IHC:1:50-1:100
<b>Form</b>	Rabbit IgG in phosphate buffered saline (without Mg <sup>2+</sup> and Ca <sup>2+</sup> ), pH 7.4, 150mM NaCl, 0.02% sodium azide and 50% glycerol.
<b>Purification Method</b>	The antibody was affinity-purified from rabbit antiserum by affinity-chromatography using epitope-specific immunogen.
<b>Clonality</b>	Polyclonal
<b>Alias</b>	39 kDa protein kinase; CAK; CAK1; CDK-activating kinase; CDKN7
<b>Product Type</b>	Polyclonal Antibody
<b>Immunogen Species</b>	Homo sapiens (Human)
<b>Target Names</b>	CDK7

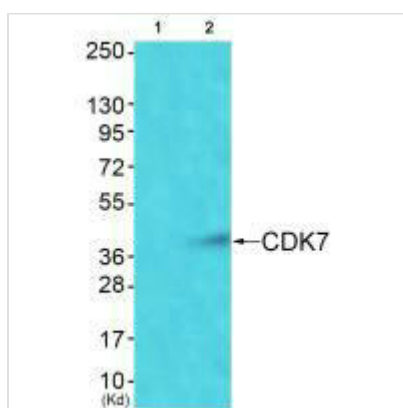
## Image



Immunohistochemistry analysis of paraffin-embedded human lung carcinoma tissue using CDK7 antibody.



Western blot analysis of extracts from 293 cells, using CDK7 antibody.



Western blot analysis of extracts from Colo cells using CDK7 antibody. The lane on the left is treated with synthesized peptide.