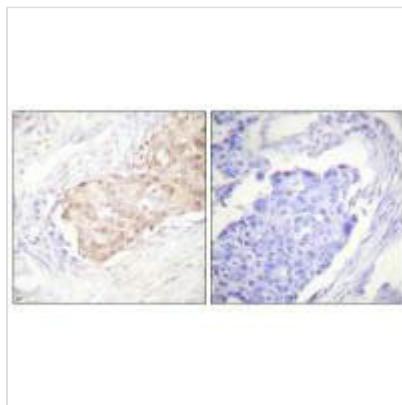




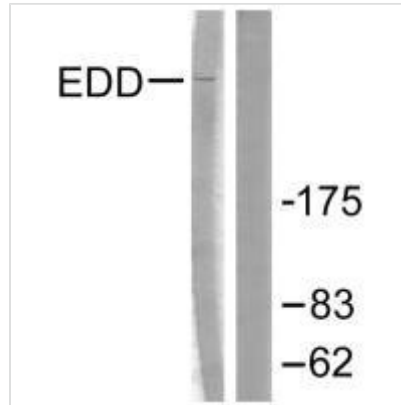
# UBR5 Antibody

<b>Product Code</b>	CSB-PA083120
<b>Storage</b>	Upon receipt, store at -20°C or -80°C. Avoid repeated freeze.
<b>Uniprot No.</b>	O95071
<b>Immunogen</b>	Synthesized peptide derived from Internal of Human EDD.
<b>Raised In</b>	Rabbit
<b>Species Reactivity</b>	Human, Mouse
<b>Specificity</b>	The antibody detects endogenous levels of total EDD protein.
<b>Tested Applications</b>	ELISA, WB, IHC; WB: 1:500-1:3000, IHC: 1:50-1:100
<b>Form</b>	Rabbit IgG in phosphate buffered saline (without Mg <sup>2+</sup> and Ca <sup>2+</sup> ), pH 7.4, 150mM NaCl, 0.02% sodium azide and 50% glycerol.
<b>Purification Method</b>	The antibody was affinity-purified from rabbit antiserum by affinity-chromatography using epitope-specific immunogen.
<b>Clonality</b>	Polyclonal
<b>Alias</b>	CAK; CD167a antigen; Cell adhesion kinase; Discoidin receptor tyrosine kinase; EC 2.7.1.112
<b>Product Type</b>	Polyclonal Antibody
<b>Immunogen Species</b>	Homo sapiens (Human)
<b>Target Names</b>	UBR5

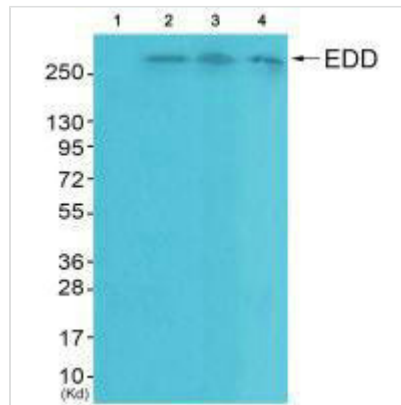
## Image



Immunohistochemistry analysis of paraffin-embedded human breast carcinoma tissue using EDD antibody.



Western blot analysis of extracts from A549 cells, using EDD antibody.



Western blot analysis of extracts from HeLa cells (Lane 2), A549 cells (Lane 3) and HepG2 cells (Lane 4), using EDD antibody. The lane on the left is treated with synthesized peptide.

**Usage**

For Research Use Only. Not for use in diagnostic or therapeutic procedures.