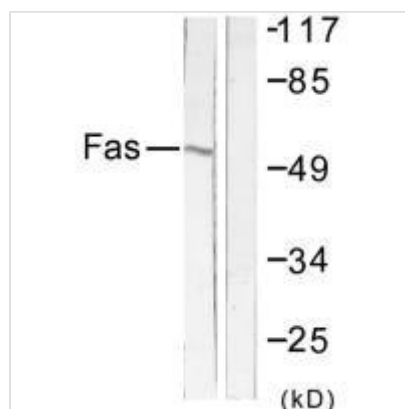




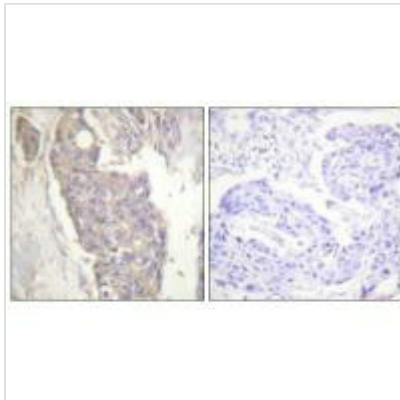
FAS Antibody

Product Code	CSB-PA942791
Storage	Upon receipt, store at -20°C or -80°C. Avoid repeated freeze.
Uniprot No.	P25445
Immunogen	Synthesized peptide derived from C-terminal of Human Fas.
Raised In	Rabbit
Species Reactivity	Human
Specificity	The antibody detects endogenous levels of total Fas protein.
Tested Applications	ELISA, WB, IHC; WB:1:500-1:3000, IHC:1:50-1:100
Form	Rabbit IgG in phosphate buffered saline (without Mg ²⁺ and Ca ²⁺), pH 7.4, 150mM NaCl, 0.02% sodium azide and 50% glycerol.
Purification Method	The antibody was affinity-purified from rabbit antiserum by affinity-chromatography using epitope-specific immunogen.
Clonality	Polyclonal
Alias	Apo-1; CD95; FasL receptor; TNFRSF6; TNFR6
Product Type	Polyclonal Antibody
Immunogen Species	Homo sapiens (Human)
Target Names	FAS

Image



Western blot analysis of extracts from LOVO cells, using Fas antibody.



Immunohistochemistry analysis of paraffin-embedded human breast carcinoma tissue using Fas antibody.