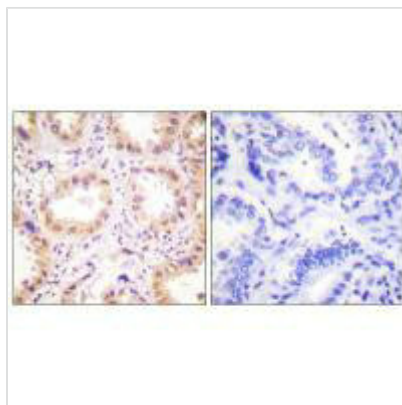




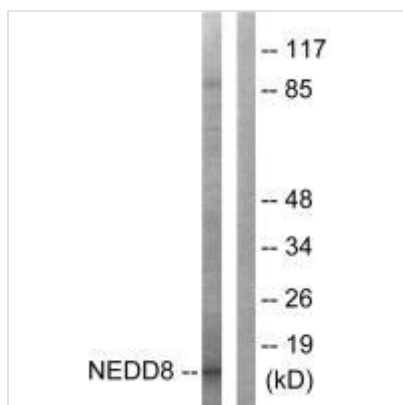
# NEDD8 Antibody

|                            |  |
|----------------------------|--|
| <b>Product Code</b>        | CSB-PA053660   |
| <b>Storage</b>             | Upon receipt, store at -20°C or -80°C. Avoid repeated freeze.  |
| <b>Uniprot No.</b>         | Q15843   |
| <b>Immunogen</b>           | Synthesized peptide derived from Internal of Human NEDD8.  |
| <b>Raised In</b>           | Rabbit   |
| <b>Species Reactivity</b>  | Human  |
| <b>Specificity</b>         | The antibody detects endogenous levels of total NEDD8 protein.   |
| <b>Tested Applications</b> | ELISA,WB,IHC;WB:1:500-1:3000,IHC:1:50-1:100  |
| <b>Form</b>                | Rabbit IgG in phosphate buffered saline (without Mg <sup>2+</sup> and Ca <sup>2+</sup> ), pH 7.4, 150mM NaCl, 0.02% sodium azide and 50% glycerol. |
| <b>Purification Method</b> | The antibody was affinity-purified from rabbit antiserum by affinity-chromatography using epitope-specific immunogen.                              |
| <b>Clonality</b>           | Polyclonal   |
| <b>Alias</b>               | NED8; NEDD-8; Ubiquitin-like protein NEDD8;  |
| <b>Product Type</b>        | Polyclonal Antibody  |
| <b>Immunogen Species</b>   | Homo sapiens (Human)   |
| <b>Target Names</b>        | NEDD8  |

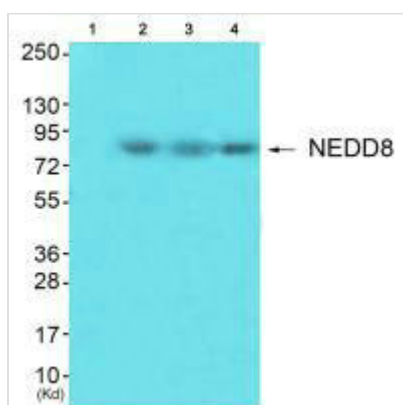
## Image



Immunohistochemistry analysis of paraffin-embedded human lung carcinoma tissue using NEDD8 antibody.



Western blot analysis of extracts from Jurkat cells, using NEDD8 antibody.



Western blot analysis of extracts from HuvEc cells (Lane 2), JK cells (Lane 3) and cos-7 cells (Lane 4), using NEDD8 antibody. The lane on the left is treated with synthesized peptide.