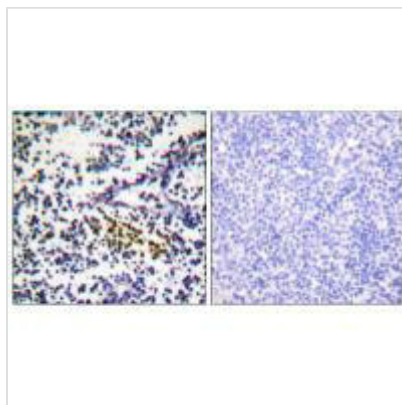




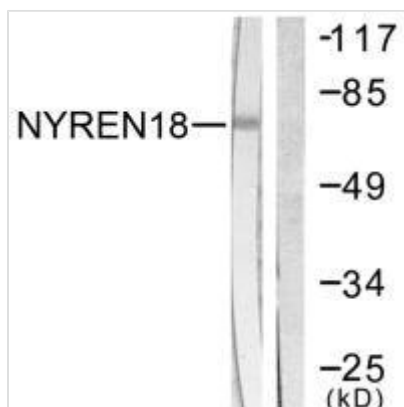
# NUB1 Antibody

<b>Product Code</b>	CSB-PA147732
<b>Storage</b>	Upon receipt, store at -20°C or -80°C. Avoid repeated freeze.
<b>Uniprot No.</b>	Q9Y5A7
<b>Immunogen</b>	Synthesized peptide derived from C-terminal of Human NYREN18.
<b>Raised In</b>	Rabbit
<b>Species Reactivity</b>	Human,Mouse
<b>Specificity</b>	The antibody detects endogenous levels of total NYREN18 protein.
<b>Tested Applications</b>	ELISA,WB,IHC;WB:1:500-1:3000,IHC:1:50-1:100
<b>Form</b>	Rabbit IgG in phosphate buffered saline (without Mg <sup>2+</sup> and Ca <sup>2+</sup> ), pH 7.4, 150mM NaCl, 0.02% sodium azide and 50% glycerol.
<b>Purification Method</b>	The antibody was affinity-purified from rabbit antiserum by affinity-chromatography using epitope-specific immunogen.
<b>Clonality</b>	Polyclonal
<b>Alias</b>	NEDD8 ultimate buster-1; NUB1; NY-REN-18 antigen;
<b>Product Type</b>	Polyclonal Antibody
<b>Immunogen Species</b>	Homo sapiens (Human)
<b>Target Names</b>	NUB1

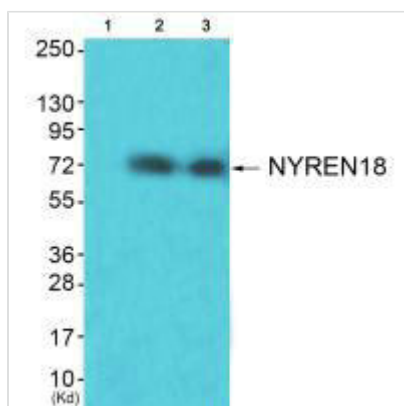
## Image



Immunohistochemistry analysis of paraffin-embedded human tonsil tissue using NYREN18 antibody.



Western blot analysis of extracts from COS7 cells, using NYREN18 antibody.



Western blot analysis of extracts from HuvEc cells (Lane 2) and JK cells (Lane 3), using NYREN18 antibody. The lane on the left is treated with synthesized peptide.