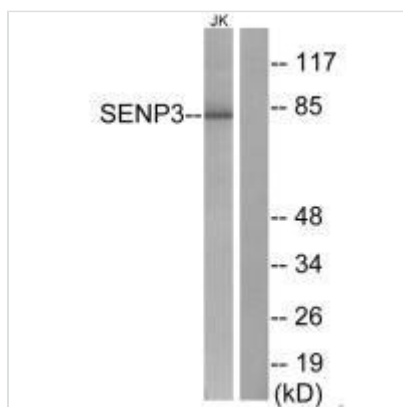




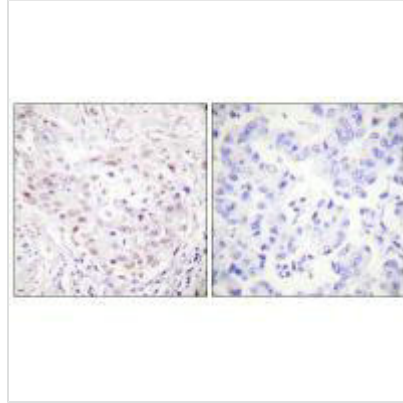
SENP3 Antibody

Product Code	CSB-PA278153
Storage	Upon receipt, store at -20°C or -80°C. Avoid repeated freeze.
Uniprot No.	Q9H4L4
Immunogen	Synthesized peptide derived from Internal of Human SENP3.
Raised In	Rabbit
Species Reactivity	Human,Mouse
Specificity	The antibody detects endogenous levels of total SENP3 protein.
Tested Applications	ELISA,WB,IHC;WB:1:500-1:3000,IHC:1:50-1:100
Form	Rabbit IgG in phosphate buffered saline (without Mg ²⁺ and Ca ²⁺), pH 7.4, 150mM NaCl, 0.02% sodium azide and 50% glycerol.
Purification Method	The antibody was affinity-purified from rabbit antiserum by affinity-chromatography using epitope-specific immunogen.
Clonality	Polyclonal
Alias	Sentrin-specific protease 3; EC=3.4.22.-; Sentrin/SUMO-specific protease SENP3; SUMO-1-specific protease 3; SSP3
Product Type	Polyclonal Antibody
Immunogen Species	Homo sapiens (Human)
Target Names	SENP3

Image



Western blot analysis of extracts from Jurkat cells, using SENP3 antibody.



Immunohistochemistry analysis of paraffin-embedded human breast carcinoma tissue, using SENP3 antibody.

Usage

For Research Use Only. Not for use in diagnostic or therapeutic procedures.