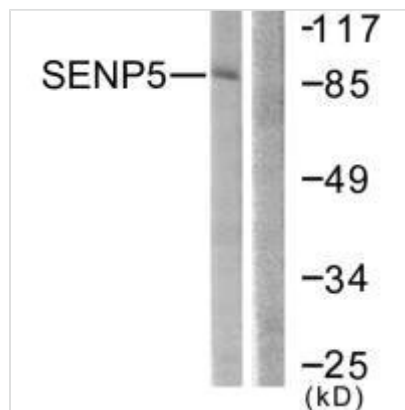




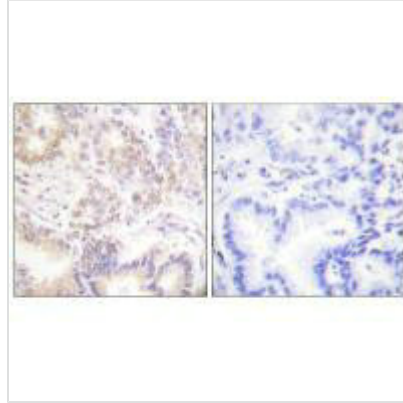
SENP5 Antibody

Product Code	CSB-PA911693
Storage	Upon receipt, store at -20°C or -80°C. Avoid repeated freeze.
Uniprot No.	Q96HI0
Immunogen	Synthesized peptide derived from Internal of Human SENP5.
Raised In	Rabbit
Species Reactivity	Human,Mouse
Specificity	The antibody detects endogenous levels of total SENP5 protein.
Tested Applications	ELISA,WB,IHC;WB:1:500-1:3000,IHC:1:50-1:100
Form	Rabbit IgG in phosphate buffered saline (without Mg ²⁺ and Ca ²⁺), pH 7.4, 150mM NaCl, 0.02% sodium azide and 50% glycerol.
Purification Method	The antibody was affinity-purified from rabbit antiserum by affinity-chromatography using epitope-specific immunogen.
Clonality	Polyclonal
Alias	EC 3.4.22.-; SUMO1/sentrin specific peptidase 5;
Product Type	Polyclonal Antibody
Immunogen Species	Homo sapiens (Human)
Target Names	SENP5

Image



Western blot analysis of extracts from COS7 cells, using SENP5 antibody.



Immunohistochemistry analysis of paraffin-embedded human lung carcinoma tissue using SENP5 antibody.

Usage

For Research Use Only. Not for use in diagnostic or therapeutic procedures.