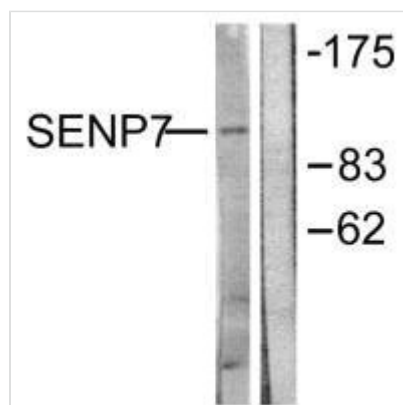




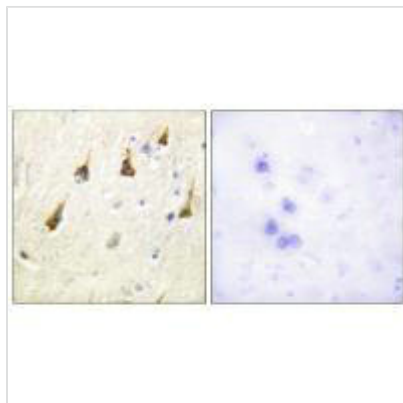
SENP7 Antibody

Product Code	CSB-PA036163
Storage	Upon receipt, store at -20°C or -80°C. Avoid repeated freeze.
Uniprot No.	Q9BQF6
Immunogen	Synthesized peptide derived from Internal of Human SENP7.
Raised In	Rabbit
Species Reactivity	Human,Mouse
Specificity	The antibody detects endogenous levels of total SENP7 protein.
Tested Applications	ELISA,WB,IHC;WB:1:500-1:3000,IHC:1:50-1:100
Form	Rabbit IgG in phosphate buffered saline (without Mg ²⁺ and Ca ²⁺), pH 7.4, 150mM NaCl, 0.02% sodium azide and 50% glycerol.
Purification Method	The antibody was affinity-purified from rabbit antiserum by affinity-chromatography using epitope-specific immunogen.
Clonality	Polyclonal
Alias	Sentrin-specific protease 7; EC 3.4.22.-; Sentrin/SUMO-specific protease SENP7; SUMO-1-specific protease 2; SUMO1/sentrin specific protease 7
Product Type	Polyclonal Antibody
Immunogen Species	Homo sapiens (Human)
Target Names	SENP7

Image



Western blot analysis of extracts from HuvEc cells, using SENP7 antibody.



Immunohistochemistry analysis of paraffin-embedded human brain tissue using SENP7 antibody.

Usage

For Research Use Only. Not for use in diagnostic or therapeutic procedures.