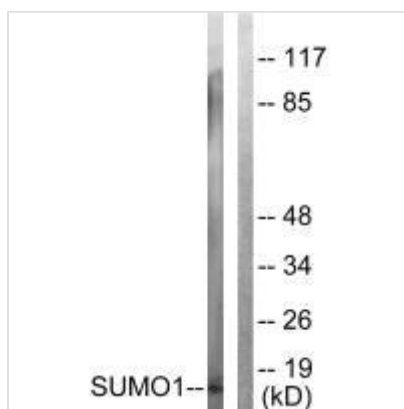




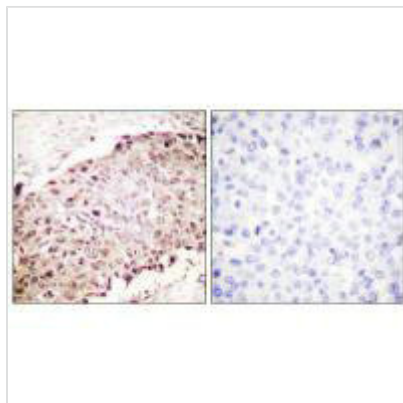
SUMO1 Antibody

Product Code	CSB-PA042567
Storage	Upon receipt, store at -20°C or -80°C. Avoid repeated freeze.
Uniprot No.	P63165
Immunogen	Synthesized peptide derived from N-terminal of Human SUMO-1.
Raised In	Rabbit
Species Reactivity	Human,Mouse,Rat
Specificity	The antibody detects endogenous levels of total SUMO-1 protein.
Tested Applications	ELISA,WB,IHC,IF;WB:1:500-1:3000,IHC:1:50-1:100,IF:1:100-1:500
Form	Rabbit IgG in phosphate buffered saline (without Mg ²⁺ and Ca ²⁺), pH 7.4, 150mM NaCl, 0.02% sodium azide and 50% glycerol.
Purification Method	The antibody was affinity-purified from rabbit antiserum by affinity-chromatography using epitope-specific immunogen.
Clonality	Polyclonal
Alias	PIC1; SENTRIN; SMT3C; SMT3H3; UBL1
Product Type	Polyclonal Antibody
Immunogen Species	Homo sapiens (Human)
Target Names	SUMO1

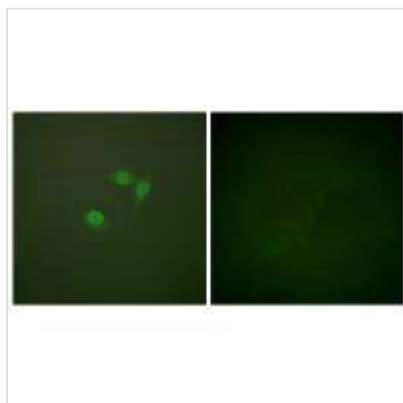
Image



Western blot analysis of extracts from 293 cells, using Sumo1 antibody.



Immunohistochemistry analysis of paraffin-embedded human breast carcinoma tissue using Sumo1 antibody.



Immunofluorescence analysis of NIH/3T3 cells, using Sumo1 antibody.

Usage

For Research Use Only. Not for use in diagnostic or therapeutic procedures.