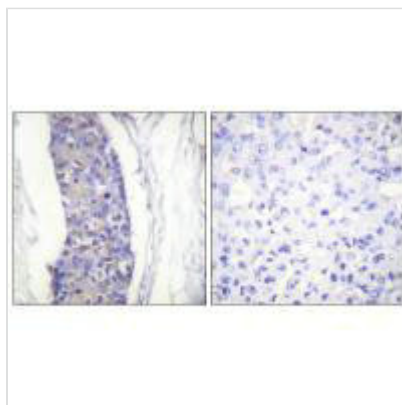




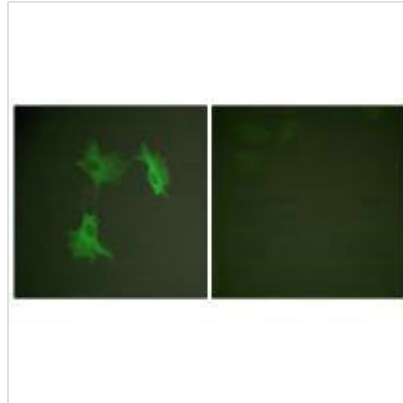
TUBA1A Antibody

Product Code	CSB-PA979507
Storage	Upon receipt, store at -20°C or -80°C. Avoid repeated freeze.
Uniprot No.	Q71U36
Immunogen	Synthesized peptide derived from C-terminal of Human Tubulin α .
Raised In	Rabbit
Species Reactivity	Human,Mouse,Rat
Specificity	The antibody detects endogenous levels of total Tubulin α protein.
Tested Applications	ELISA,WB,IHC,IF;WB:1:500-1:3000,IHC:1:50-1:100,IF:1:100-1:500
Form	Rabbit IgG in phosphate buffered saline (without Mg ²⁺ and Ca ²⁺), pH 7.4, 150mM NaCl, 0.02% sodium azide and 50% glycerol.
Purification Method	The antibody was affinity-purified from rabbit antiserum by affinity-chromatography using epitope-specific immunogen.
Clonality	Polyclonal
Alias	Alpha-tubulin 1; TBA1; TUBA1; Testis-specific alpha- tubulin; Tubulin H2-alpha
Product Type	Polyclonal Antibody
Immunogen Species	Homo sapiens (Human)
Target Names	TUBA1A

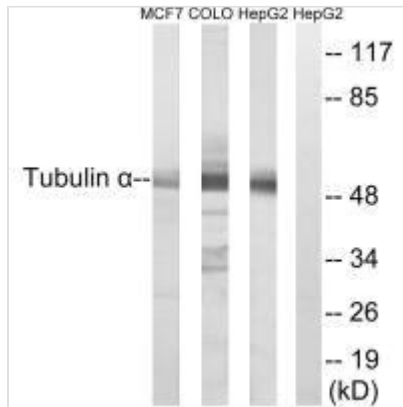
Image



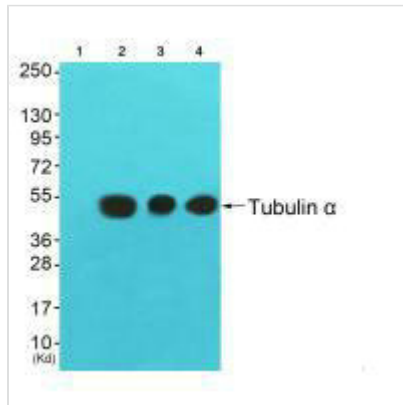
Immunohistochemistry analysis of paraffin-embedded human breast carcinoma tissue using Tubulin α antibody.



Immunofluorescence analysis of NIH/3T3 cells, using Tubulin α antibody.



Western blot analysis of extracts from MCF7, COLO and HepG2 cells, using Tubulin α antibody.



Western blot analysis of extracts from 3T3 cells (Lane 2), COLO cells (Lane 3) and HuvEc cells (Lane 4), using Tubulin α antibody. The lane on the left is treated with synthesized peptide.

Usage

For Research Use Only. Not for use in diagnostic or therapeutic procedures.