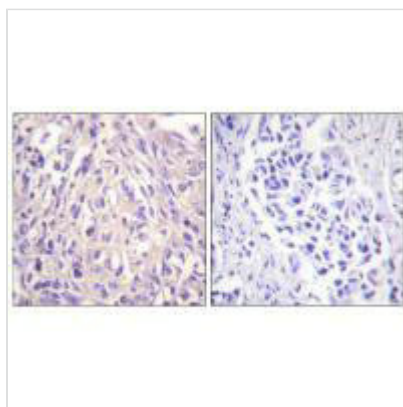




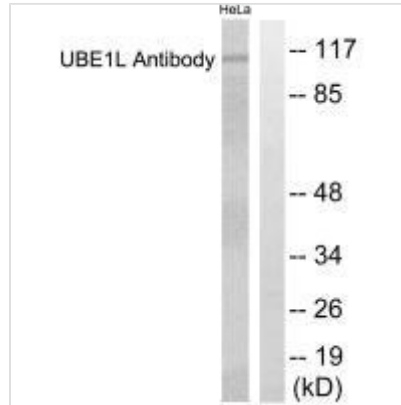
UBA7 Antibody

Product Code	CSB-PA991105
Storage	Upon receipt, store at -20°C or -80°C. Avoid repeated freeze.
Uniprot No.	P41226
Immunogen	Synthesized peptide derived from C-terminal of Human UBE1L.
Raised In	Rabbit
Species Reactivity	Human, Mouse
Specificity	The antibody detects endogenous levels of total UBE1L protein.
Tested Applications	ELISA, WB, IHC; WB: 1:500-1:3000, IHC: 1:50-1:100
Form	Rabbit IgG in phosphate buffered saline (without Mg ²⁺ and Ca ²⁺), pH 7.4, 150mM NaCl, 0.02% sodium azide and 50% glycerol.
Purification Method	The antibody was affinity-purified from rabbit antiserum by affinity-chromatography using epitope-specific immunogen.
Clonality	Polyclonal
Alias	D8; UBE2; ubiquitin-activating enzyme E1 homolog; ubiquitin-activating enzyme E1-like; ubiquitin-activating enzyme E1-related protein
Product Type	Polyclonal Antibody
Immunogen Species	Homo sapiens (Human)
Target Names	UBA7

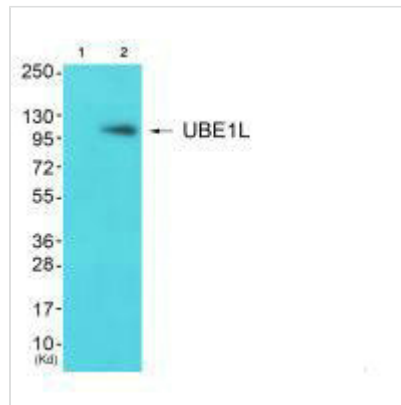
Image



Immunohistochemistry analysis of paraffin-embedded human breast carcinoma tissue using UBE1L antibody.



Western blot analysis of extracts from HeLa cells, using UBE1L antibody.



Western blot analysis of extracts from JK cells (Lane 2), using UBE1L antibody. The lane on the left is treated with synthesized peptide.

Usage

For Research Use Only. Not for use in diagnostic or therapeutic procedures.