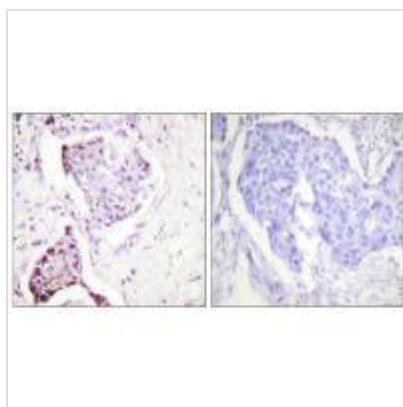




RPS27A Antibody

| | |
|----------------------------|--|
| Product Code | CSB-PA094989 |
| Storage | Upon receipt, store at -20°C or -80°C. Avoid repeated freeze. |
| Uniprot No. | P62988 |
| Immunogen | Synthesized peptide derived from Internal of Human Ubiquitin. |
| Raised In | Rabbit |
| Species Reactivity | Human, Mouse |
| Specificity | The antibody detects endogenous levels of total ubiquitin protein. |
| Tested Applications | ELISA, IHC; IHC: 1:50-1:100 |
| Form | Rabbit IgG in phosphate buffered saline (without Mg ²⁺ and Ca ²⁺), pH 7.4, 150mM NaCl, 0.02% sodium azide and 50% glycerol. |
| Purification Method | The antibody was affinity-purified from rabbit antiserum by affinity-chromatography using epitope-specific immunogen. |
| Clonality | Polyclonal |
| Alias | RPS27A; UBA52; UBA80; UBB; UBC |
| Product Type | Polyclonal Antibody |
| Immunogen Species | Homo sapiens (Human) |
| Target Names | RPS27A |

Image



Immunohistochemistry analysis of paraffin-embedded human breast carcinoma tissue, using Ubiquitin antibody.

Usage

For Research Use Only. Not for use in diagnostic or therapeutic procedures.