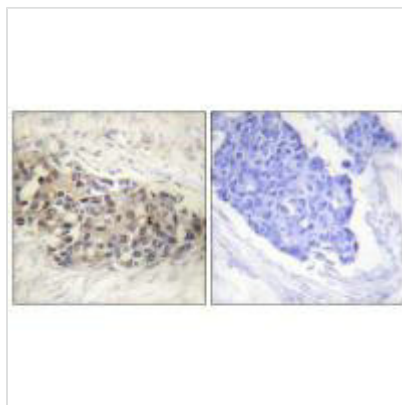




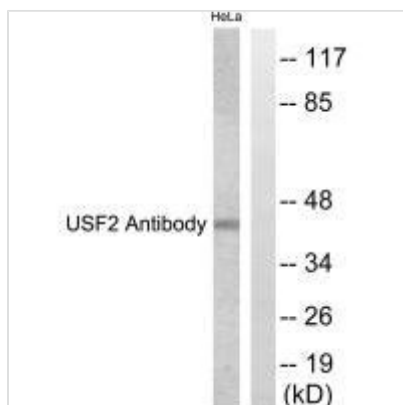
USF2 Antibody

Product Code	CSB-PA290775
Storage	Upon receipt, store at -20°C or -80°C. Avoid repeated freeze.
Uniprot No.	Q15853
Immunogen	Synthesized peptide derived from Internal of Human USF-2.
Raised In	Rabbit
Species Reactivity	Human,Mouse,Rat
Specificity	The antibody detects endogenous levels of total USF-2 protein.
Tested Applications	ELISA,WB,IHC;WB:1:500-1:3000,IHC:1:50-1:100
Form	Rabbit IgG in phosphate buffered saline (without Mg ²⁺ and Ca ²⁺), pH 7.4, 150mM NaCl, 0.02% sodium azide and 50% glycerol.
Purification Method	The antibody was affinity-purified from rabbit antiserum by affinity-chromatography using epitope-specific immunogen.
Clonality	Polyclonal
Alias	FIP; upstream transcription factor 2; c-fos interacting;
Product Type	Polyclonal Antibody
Immunogen Species	Homo sapiens (Human)
Target Names	USF2

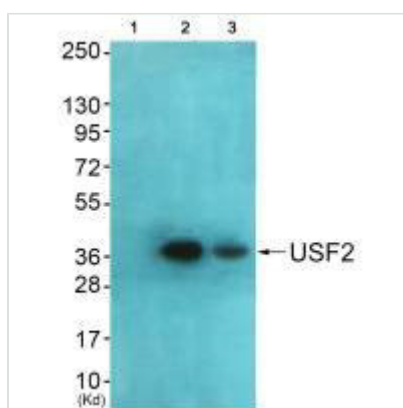
Image



Immunohistochemistry analysis of paraffin-embedded human breast carcinoma tissue using USF2 antibody.



Western blot analysis of extracts from HeLa cells, using USF2 antibody.



Western blot analysis of extracts from HeLa cells and HepG2 cells using USF2 antibody. The lane on the left is treated with synthesized peptide.