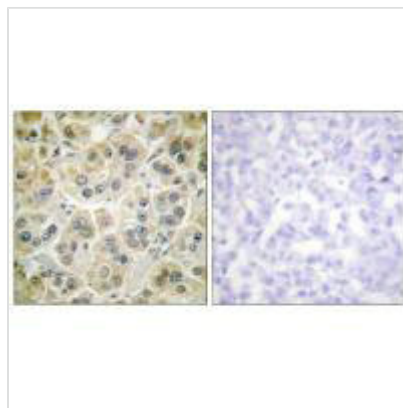




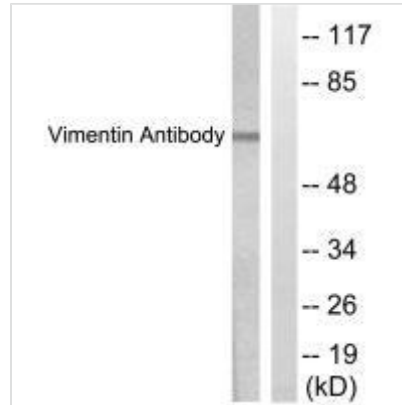
# VIM Antibody

<b>Product Code</b>	CSB-PA233606
<b>Storage</b>	Upon receipt, store at -20°C or -80°C. Avoid repeated freeze.
<b>Uniprot No.</b>	P08670
<b>Immunogen</b>	Synthesized peptide derived from Internal of Human vimentin.
<b>Raised In</b>	Rabbit
<b>Species Reactivity</b>	Human,Mouse,Rat
<b>Specificity</b>	The antibody detects endogenous levels of total vimentin protein.
<b>Tested Applications</b>	ELISA,WB,IHC;WB:1:500-1:3000,IHC:1:50-1:100
<b>Form</b>	Rabbit IgG in phosphate buffered saline (without Mg <sup>2+</sup> and Ca <sup>2+</sup> ), pH 7.4, 150mM NaCl, 0.02% sodium azide and 50% glycerol.
<b>Purification Method</b>	The antibody was affinity-purified from rabbit antiserum by affinity-chromatography using epitope-specific immunogen.
<b>Clonality</b>	Polyclonal
<b>Alias</b>	VIME; vimentin;
<b>Product Type</b>	Polyclonal Antibody
<b>Immunogen Species</b>	Homo sapiens (Human)
<b>Target Names</b>	VIM

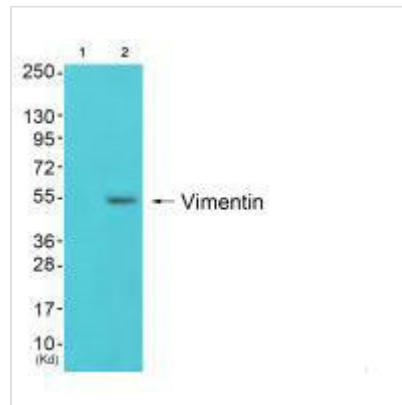
## Image



Immunohistochemistry analysis of paraffin-embedded human colon carcinoma tissue using Vimentin antibody.



Western blot analysis of extracts from HepG2 cells, treated with Adriamycin (0.5uM, 5hours), using Vimentin antibody.



Western blot analysis of extracts from 293 cells (Lane 2), using Vimentin antibody. The lane on the left is treated with synthesized peptide.

## Usage

For Research Use Only. Not for use in diagnostic or therapeutic procedures.