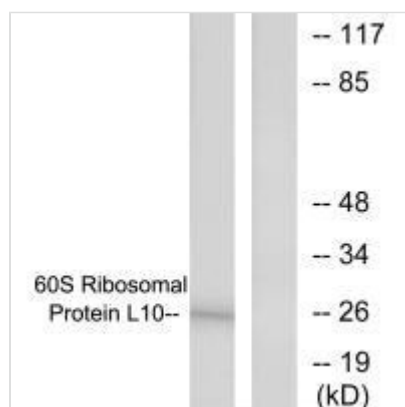




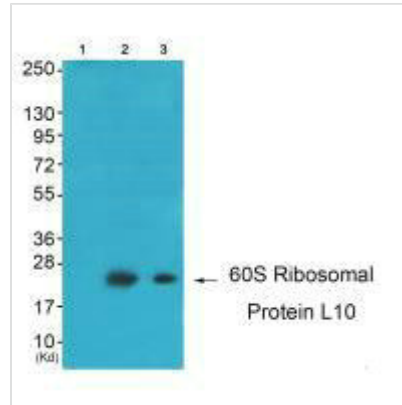
RPL10 Antibody

Product Code	CSB-PA012538
Storage	Upon receipt, store at -20°C or -80°C. Avoid repeated freeze.
Uniprot No.	P27635
Immunogen	Synthesized peptide derived from internal of Human 60S Ribosomal Protein L10.
Raised In	Rabbit
Species Reactivity	Human,Mouse,Rat
Specificity	The antibody detects endogenous levels of total 60S Ribosomal Protein L10 protein.
Tested Applications	ELISA,WB;WB:1:500-1:3000
Form	Rabbit IgG in phosphate buffered saline (without Mg ²⁺ and Ca ²⁺), pH 7.4, 150mM NaCl, 0.02% sodium azide and 50% glycerol.
Purification Method	The antibody was affinity-purified from rabbit antiserum by affinity-chromatography using epitope-specific immunogen.
Clonality	Polyclonal
Alias	60S ribosomal protein L10; Protein QM; Tumor suppressor QM; Laminin receptor homolog; RPL10
Product Type	Polyclonal Antibody
Immunogen Species	Homo sapiens (Human)
Target Names	RPL10

Image



Western blot analysis of extracts from K562 cells, treated with Insulin (0.01u/ml, 15mins), using 60S Ribosomal Protein L10 antibody.



Western blot analysis of extracts from K562 cells (Lane 2), JK cells (Lane 3) and 293 cells (Lane 4), using 60S Ribosomal Protein L10 antibody. The lane on the left is treated with synthesized peptide.

Usage

For Research Use Only. Not for use in diagnostic or therapeutic procedures.