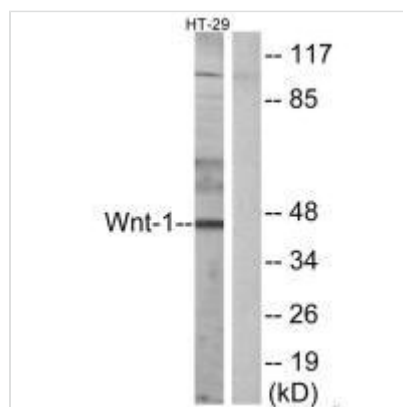




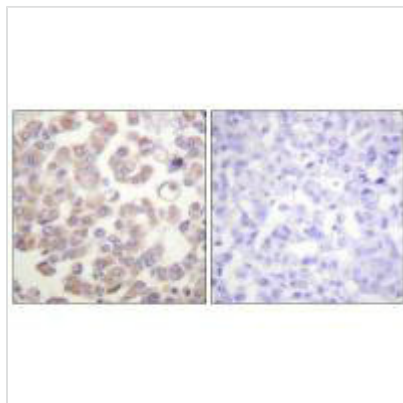
WNT1 Antibody

Product Code	CSB-PA210558
Storage	Upon receipt, store at -20°C or -80°C. Avoid repeated freeze.
Uniprot No.	P04628
Immunogen	Synthesized peptide derived from Internal of Human WNT1.
Raised In	Rabbit
Species Reactivity	Human,Mouse
Specificity	The antibody detects endogenous levels of total WNT1 protein.
Tested Applications	ELISA,WB,IHC,IF;WB:1:500-1:3000,IHC:1:50-1:100,IF:1:100-1:500
Form	Rabbit IgG in phosphate buffered saline (without Mg ²⁺ and Ca ²⁺), pH 7.4, 150mM NaCl, 0.02% sodium azide and 50% glycerol.
Purification Method	The antibody was affinity-purified from rabbit antiserum by affinity-chromatography using epitope-specific immunogen.
Clonality	Polyclonal
Alias	ONCOGENE INT1; wingless-type MMTV integration site family; member 1; INT1; Proto-oncogene protein Wnt-1 [Precursor]
Product Type	Polyclonal Antibody
Immunogen Species	Homo sapiens (Human)
Target Names	WNT1

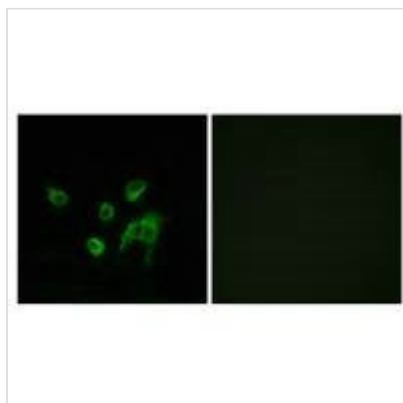
Image



Western blot analysis of extracts from HT-29 cells, using WNT1 antibody.



Immunohistochemistry analysis of paraffin-embedded human breast carcinoma tissue, using WNT1 antibody.



Immunofluorescence analysis of COS-7 cells, using WNT1 antibody.

Usage

For Research Use Only. Not for use in diagnostic or therapeutic procedures.