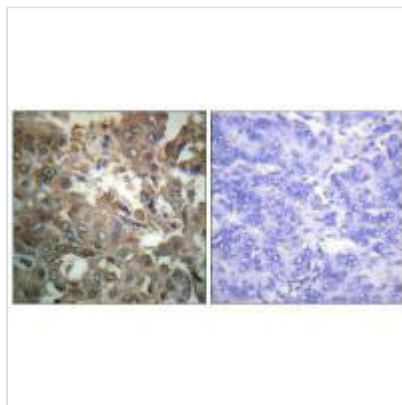




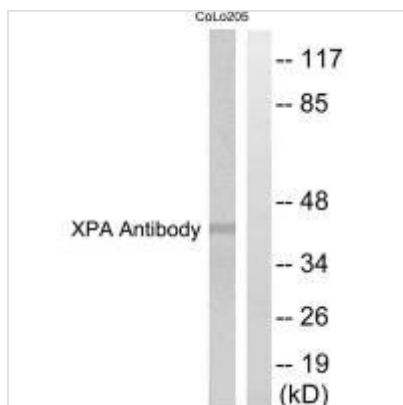
XPA Antibody

Product Code	CSB-PA238469
Storage	Upon receipt, store at -20°C or -80°C. Avoid repeated freeze.
Uniprot No.	P23025
Immunogen	Synthesized peptide derived from Internal of Human XPA.
Raised In	Rabbit
Species Reactivity	Human,Mouse
Specificity	The antibody detects endogenous levels of total XPA protein.
Tested Applications	ELISA,WB,IHC;WB:1:500-1:3000,IHC:1:50-1:100
Form	Rabbit IgG in phosphate buffered saline (without Mg ²⁺ and Ca ²⁺), pH 7.4, 150mM NaCl, 0.02% sodium azide and 50% glycerol.
Purification Method	The antibody was affinity-purified from rabbit antiserum by affinity-chromatography using epitope-specific immunogen.
Clonality	Polyclonal
Alias	DNA-repair protein complementing XP-A cells; XPAC; Xeroderma pigmentosum group A complementing protein;
Product Type	Polyclonal Antibody
Immunogen Species	Homo sapiens (Human)
Target Names	XPA

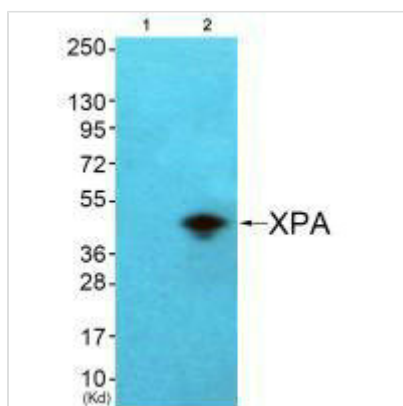
Image



Immunohistochemistry analysis of paraffin-embedded human breast carcinoma tissue using XPA antibody.



Western blot analysis of extracts from COLO205 cells, using XPA antibody.



Western blot analysis of extracts from COS7 cells (Lane 2), using XPA antibody. The lane on the left is treated with synthesized peptide.