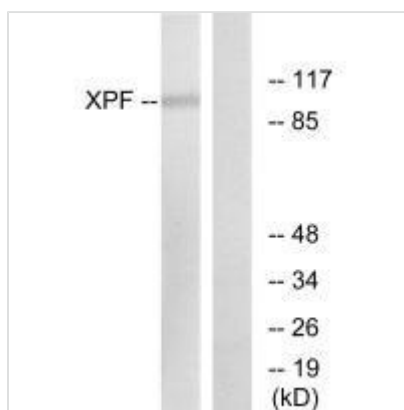




ERCC4 Antibody

Product Code	CSB-PA071308
Storage	Upon receipt, store at -20°C or -80°C. Avoid repeated freeze.
Uniprot No.	Q92889
Immunogen	Synthesized peptide derived from internal of Human XPF.
Raised In	Rabbit
Species Reactivity	Human,Mouse
Specificity	The antibody detects endogenous levels of total XPF protein.
Tested Applications	ELISA,WB;WB:1:500-1:3000
Form	Rabbit IgG in phosphate buffered saline (without Mg ²⁺ and Ca ²⁺), pH 7.4, 150mM NaCl, 0.02% sodium azide and 50% glycerol.
Purification Method	The antibody was affinity-purified from rabbit antiserum by affinity-chromatography using epitope-specific immunogen.
Clonality	Polyclonal
Alias	DNA repair endonuclease XPF; EC 3.1.-.-; DNA excision repair protein ERCC-4; DNA-repair protein complementing XP-F cells; Xeroderma pigmentosum group F-complementing protein
Product Type	Polyclonal Antibody
Immunogen Species	Homo sapiens (Human)
Target Names	ERCC4

Image



Western blot analysis of extracts from 293 cells, using XPF antibody.

Usage

For Research Use Only. Not for use in diagnostic or therapeutic procedures.