



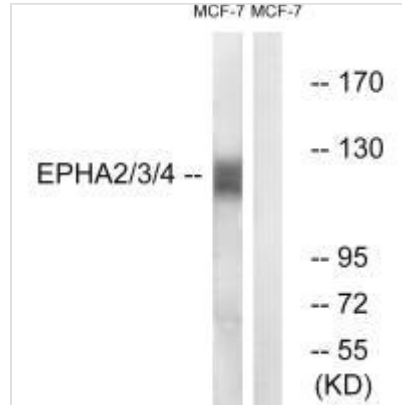
EPHA2/EPHA3/EPHA4 (Ab-588/596) Antibody

Product Code	CSB-PA234206
Storage	Upon receipt, store at -20°C or -80°C. Avoid repeated freeze.
Uniprot No.	P29317
Immunogen	Synthesized non-phosphopeptide derived from Human EPHA2/3/4 around the phosphorylation site of tyrosine 588/596 (T-Y(p)-V-D-P).
Raised In	Rabbit
Species Reactivity	Human, Mouse
Specificity	The antibody detects endogenous levels of total EPHA2/3/4 protein
Tested Applications	ELISA, WB, IF; WB: 1:500-1:3000, IF: 1:100-1:500
Form	Rabbit IgG in phosphate buffered saline (without Mg ²⁺ and Ca ²⁺), pH 7.4, 150mM NaCl, 0.02% sodium azide and 50% glycerol.
Purification Method	The antibody was affinity-purified from rabbit antiserum by affinity-chromatography using epitope-specific immunogen.
Clonality	Polyclonal
Alias	EC 2.7.10.1; ECK; Ephrin type-A receptor 2 precursor; Epithelial cell kinase; MPK-5
Product Type	Polyclonal Antibody
Immunogen Species	Homo sapiens (Human)
Target Names	EPHA2/EPHA3/EPHA4

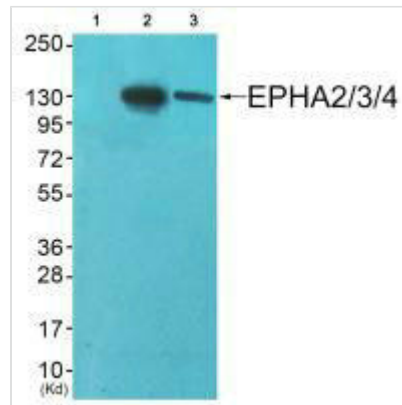
Image



Immunofluorescence analysis of A549 cells, using EPHA2/3/4 (Ab-588/596) antibody.



Western blot analysis of extracts from MCF7 cells, using EPHA2/3/4 (Ab-588/596) antibody.



Western blot analysis of extracts from A549 cells (Lane 2) and HepG2 cells (Lane 3), using EPHA2/3/4 (Ab-588/596) antibody. The lane on the left is treated with synthesized peptide.

Usage

For Research Use Only. Not for use in diagnostic or therapeutic procedures.