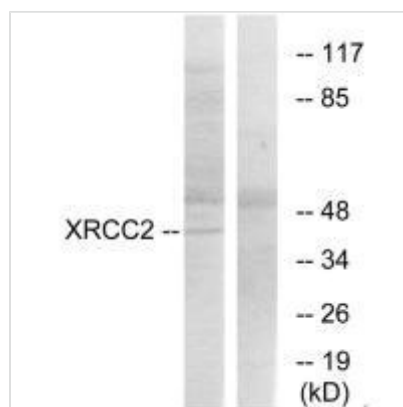




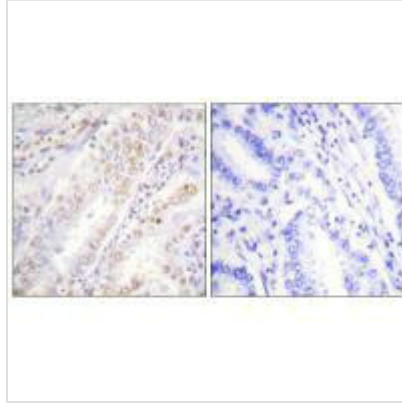
XRCC2 Antibody

Product Code	CSB-PA583395
Storage	Upon receipt, store at -20°C or -80°C. Avoid repeated freeze.
Uniprot No.	O43543
Immunogen	Synthesized peptide derived from internal of Human XRCC2.
Raised In	Rabbit
Species Reactivity	Human
Specificity	The antibody detects endogenous levels of total XRCC2 protein.
Tested Applications	ELISA,WB,IHC;WB:1:500-1:3000,IHC:1:50-1:100
Form	Rabbit IgG in phosphate buffered saline (without Mg ²⁺ and Ca ²⁺), pH 7.4, 150mM NaCl, 0.02% sodium azide and 50% glycerol.
Purification Method	The antibody was affinity-purified from rabbit antiserum by affinity-chromatography using epitope-specific immunogen.
Clonality	Polyclonal
Alias	X-RAY REPAIR; COMPLEMENTING DEFECTIVE; IN CHINESE HAMSTER; 2;
Product Type	Polyclonal Antibody
Immunogen Species	Homo sapiens (Human)
Target Names	XRCC2

Image



Western blot analysis of extracts from 293 cells, using XRCC2 antibody.



Immunohistochemistry analysis of paraffin-embedded human lung carcinoma tissue, using XRCC2 antibody.

Usage

For Research Use Only. Not for use in diagnostic or therapeutic procedures.