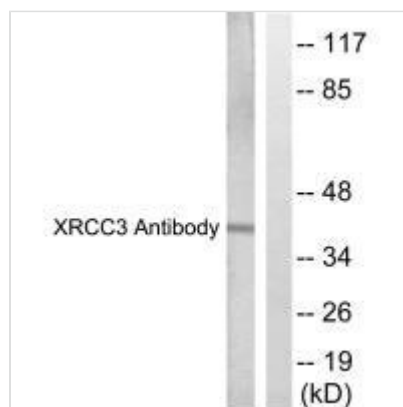




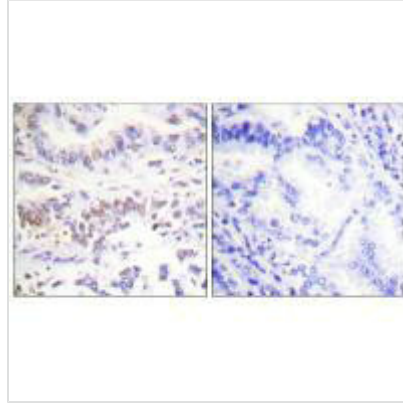
XRCC3 Antibody

Product Code	CSB-PA868959
Storage	Upon receipt, store at -20°C or -80°C. Avoid repeated freeze.
Uniprot No.	O43542
Immunogen	Synthesized peptide derived from Internal of Human XRCC3.
Raised In	Rabbit
Species Reactivity	Human
Specificity	The antibody detects endogenous levels of total XRCC3 protein.
Tested Applications	ELISA,WB,IHC;WB:1:500-1:3000,IHC:1:50-1:100
Form	Rabbit IgG in phosphate buffered saline (without Mg ²⁺ and Ca ²⁺), pH 7.4, 150mM NaCl, 0.02% sodium azide and 50% glycerol.
Purification Method	The antibody was affinity-purified from rabbit antiserum by affinity-chromatography using epitope-specific immunogen.
Clonality	Polyclonal
Alias	X-RAY REPAIR CROSS- COMPLEMENTING PROTEIN 3; X-RAY REPAIR; COMPLEMENTING DEFECTIVE IN CHINESE HAMSTER 3;
Product Type	Polyclonal Antibody
Immunogen Species	Homo sapiens (Human)
Target Names	XRCC3

Image



Western blot analysis of extracts from HepG2 cells, treated with Adriamycin (0.5uM, 5hours), using XRCC3 antibody.



Immunohistochemistry analysis of paraffin-embedded human lung carcinoma tissue using XRCC3 antibody.

Usage

For Research Use Only. Not for use in diagnostic or therapeutic procedures.