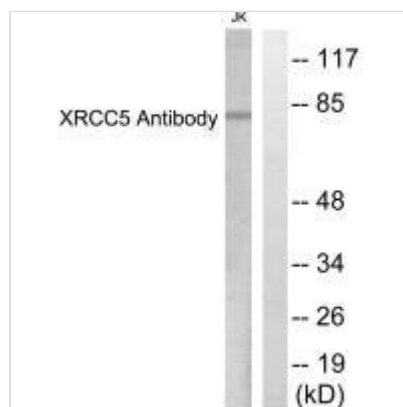




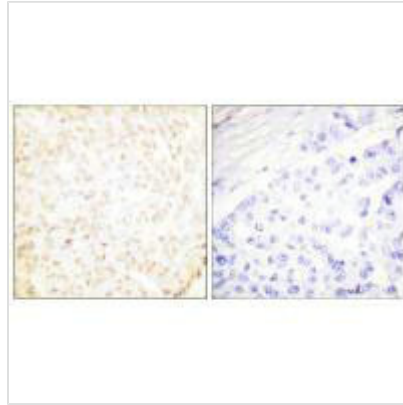
XRCC5 Antibody

Product Code	CSB-PA068028
Storage	Upon receipt, store at -20°C or -80°C. Avoid repeated freeze.
Uniprot No.	P13010
Immunogen	Synthesized peptide derived from C-terminal of Human XRCC5.
Raised In	Rabbit
Species Reactivity	Human, Mouse
Specificity	The antibody detects endogenous levels of total XRCC5 protein.
Tested Applications	ELISA, WB, IHC; WB: 1:500-1:3000, IHC: 1:50-1:100
Form	Rabbit IgG in phosphate buffered saline (without Mg ²⁺ and Ca ²⁺), pH 7.4, 150mM NaCl, 0.02% sodium azide and 50% glycerol.
Purification Method	The antibody was affinity-purified from rabbit antiserum by affinity-chromatography using epitope-specific immunogen.
Clonality	Polyclonal
Alias	86 kDa subunit of Ku antigen; ATP-dependent DNA helicase II; 80 kDa subunit; CTC box binding factor 85 kDa subunit; CTC85
Product Type	Polyclonal Antibody
Immunogen Species	Homo sapiens (Human)
Target Names	XRCC5

Image



Western blot analysis of extracts from Jurkat cells, using XRCC5 antibody.



Immunohistochemistry analysis of paraffin-embedded human breast carcinoma tissue using XRCC5 antibody.

Usage

For Research Use Only. Not for use in diagnostic or therapeutic procedures.