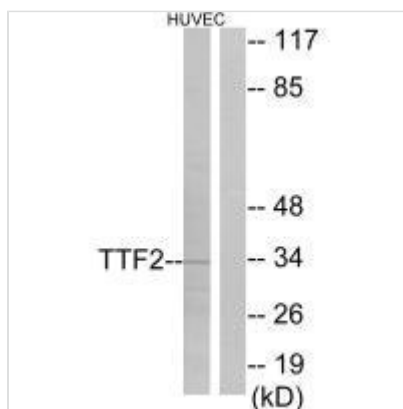




FOXE1 Antibody

Product Code	CSB-PA252072
Storage	Upon receipt, store at -20°C or -80°C. Avoid repeated freeze.
Uniprot No.	O00358
Immunogen	Synthesized peptide derived from internal of Human TTF2.
Raised In	Rabbit
Species Reactivity	Human,Mouse,Rat
Specificity	The antibody detects endogenous levels of total TTF2 protein.
Tested Applications	ELISA,WB;WB:1:500-1:3000
Form	Rabbit IgG in phosphate buffered saline (without Mg ²⁺ and Ca ²⁺), pH 7.4, 150mM NaCl, 0.02% sodium azide and 50% glycerol.
Purification Method	The antibody was affinity-purified from rabbit antiserum by affinity-chromatography using epitope-specific immunogen.
Clonality	Polyclonal
Alias	Forkhead box protein E1; Thyroid transcription factor 2; TTF-2; Forkhead-related protein FKHL15; FKHL15
Product Type	Polyclonal Antibody
Immunogen Species	Homo sapiens (Human)
Target Names	FOXE1

Image



Western blot analysis of extracts from HUVEC cells, using TTF2 antibody.

Usage For Research Use Only. Not for use in diagnostic or therapeutic procedures.