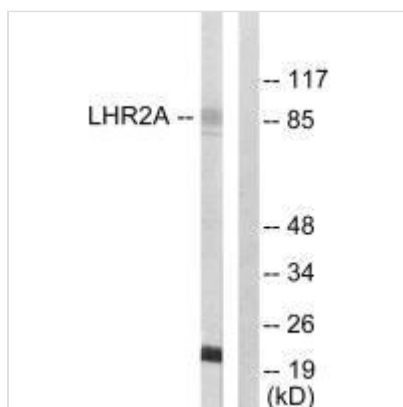




VWA5A Antibody

Product Code	CSB-PA578700
Storage	Upon receipt, store at -20°C or -80°C. Avoid repeated freeze.
Uniprot No.	O00534
Immunogen	Synthesized peptide derived from Internal of Human LHR2A.
Raised In	Rabbit
Species Reactivity	Human
Specificity	The antibody detects endogenous levels of total LHR2A protein.
Tested Applications	ELISA, WB; WB: 1:500-1:3000
Form	Rabbit IgG in phosphate buffered saline (without Mg ²⁺ and Ca ²⁺), pH 7.4, 150mM NaCl, 0.02% sodium azide and 50% glycerol.
Purification Method	The antibody was affinity-purified from rabbit antiserum by affinity-chromatography using epitope-specific immunogen.
Clonality	Polyclonal
Alias	Loss of heterozygosity 11 chromosomal region 2 gene A protein; Breast cancer suppressor candidate 1; BCSC-1; LOH11CR2A; BCSC1
Product Type	Polyclonal Antibody
Immunogen Species	Homo sapiens (Human)
Target Names	VWA5A

Image



Western blot analysis of extracts from 293 cells, using LHR2A antibody.

Usage For Research Use Only. Not for use in diagnostic or therapeutic procedures.