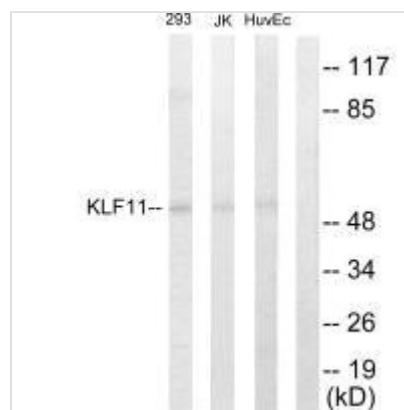




KLF11 Antibody

Product Code	CSB-PA594801
Storage	Upon receipt, store at -20°C or -80°C. Avoid repeated freeze.
Uniprot No.	O14901
Immunogen	Synthesized peptide derived from Internal of Human KLF11.
Raised In	Rabbit
Species Reactivity	Human,Mouse
Specificity	The antibody detects endogenous levels of total KLF11 protein.
Tested Applications	ELISA,WB;WB:1:500-1:3000
Form	Rabbit IgG in phosphate buffered saline (without Mg ²⁺ and Ca ²⁺), pH 7.4, 150mM NaCl, 0.02% sodium azide and 50% glycerol.
Purification Method	The antibody was affinity-purified from rabbit antiserum by affinity-chromatography using epitope-specific immunogen.
Clonality	Polyclonal
Alias	KLF11; Krueppel-like factor 11; TGFB-inducible early growth response protein 2; TIEG-2; transforming growth factor-beta-inducible early growth response protein 2
Product Type	Polyclonal Antibody
Immunogen Species	Homo sapiens (Human)
Target Names	KLF11

Image



Western blot analysis of extracts from 293 cells, Jurkat cells and HuvEc cells, using KLF11 antibody.

Usage

For Research Use Only. Not for use in diagnostic or therapeutic procedures.