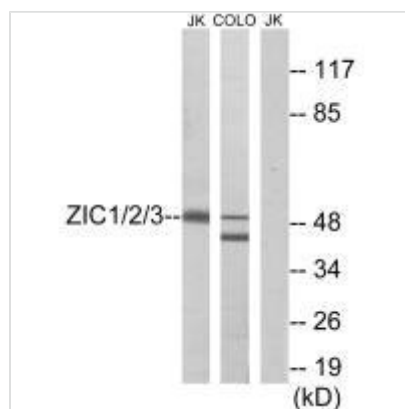




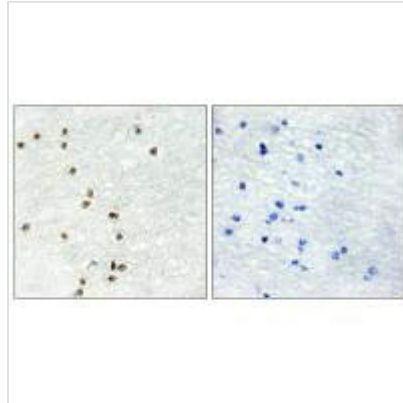
ZIC1 Antibody

Product Code	CSB-PA795975
Storage	Upon receipt, store at -20°C or -80°C. Avoid repeated freeze.
Uniprot No.	Q15915
Immunogen	Synthesized peptide derived from internal of Human ZIC1/2/3.
Raised In	Rabbit
Species Reactivity	Human,Mouse
Specificity	The antibody detects endogenous levels of total ZIC1/2/3 protein.
Tested Applications	ELISA,WB,IHC;WB:1:500-1:3000,IHC:1:50-1:100
Form	Rabbit IgG in phosphate buffered saline (without Mg ²⁺ and Ca ²⁺), pH 7.4, 150mM NaCl, 0.02% sodium azide and 50% glycerol.
Purification Method	The antibody was affinity-purified from rabbit antiserum by affinity-chromatography using epitope-specific immunogen.
Clonality	Polyclonal
Alias	Zinc finger protein ZIC 1; Zinc finger protein of the cerebellum 1; ZIC1;
Product Type	Polyclonal Antibody
Immunogen Species	Homo sapiens (Human)
Target Names	ZIC1

Image



Western blot analysis of extracts from Jurkat cells and COLO cells, using ZIC1/2/3 antibody.



Immunohistochemistry analysis of paraffin-embedded human brain tissue using ZIC1/2/3 antibody.

Usage

For Research Use Only. Not for use in diagnostic or therapeutic procedures.