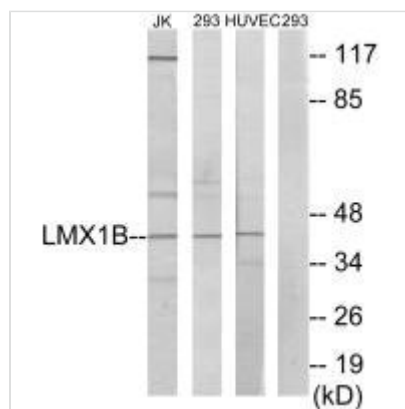




LMX1B Antibody

Product Code	CSB-PA106950
Storage	Upon receipt, store at -20°C or -80°C. Avoid repeated freeze.
Uniprot No.	O60663
Immunogen	Synthesized peptide derived from internal of Human LMX1B.
Raised In	Rabbit
Species Reactivity	Human, Mouse
Specificity	The antibody detects endogenous levels of total LMX1B protein.
Tested Applications	ELISA, WB; WB: 1:500-1:3000
Form	Rabbit IgG in phosphate buffered saline (without Mg ²⁺ and Ca ²⁺), pH 7.4, 150mM NaCl, 0.02% sodium azide and 50% glycerol.
Purification Method	The antibody was affinity-purified from rabbit antiserum by affinity-chromatography using epitope-specific immunogen.
Clonality	Polyclonal
Alias	LIM homeobox transcription factor 1 beta; LIM/homeobox protein LMX1B; LIM/homeobox protein 1.2; LMX-1.2; LMX1B
Product Type	Polyclonal Antibody
Immunogen Species	Homo sapiens (Human)
Target Names	LMX1B

Image



Western blot analysis of extracts from Jurkat cells, 293 cells and HUVEC cells, using LMX1B antibody.

Usage For Research Use Only. Not for use in diagnostic or therapeutic procedures.