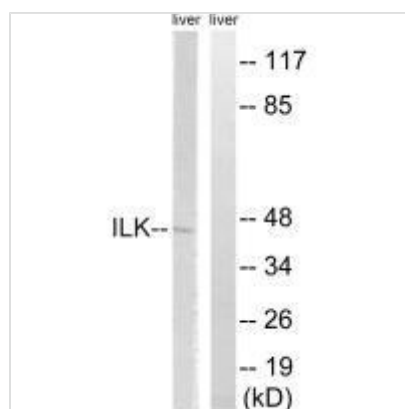




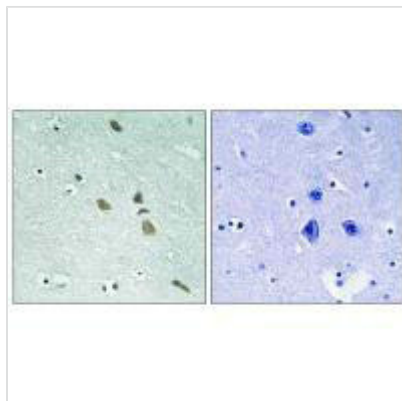
ILK (Ab-246) Antibody

Product Code	CSB-PA634226
Storage	Upon receipt, store at -20°C or -80°C. Avoid repeated freeze.
Uniprot No.	Q13418
Immunogen	Synthesized non-phosphopeptide derived from Human ILK around the phosphorylation site of serine 246 (I-F-S(p)-H-P).
Raised In	Rabbit
Species Reactivity	Human,Mouse
Specificity	The antibody detects endogenous levels of total ILK protein.
Tested Applications	ELISA,WB,IHC;WB:1:500-1:3000,IHC:1:50-1:100
Form	Rabbit IgG in phosphate buffered saline (without Mg ²⁺ and Ca ²⁺), pH 7.4, 150mM NaCl, 0.02% sodium azide and 50% glycerol.
Purification Method	The antibody was affinity-purified from rabbit antiserum by affinity-chromatography using epitope-specific immunogen.
Clonality	Polyclonal
Alias	59 kDa serine/threonine protein kinase; EC 2.7.11.1; ILK-1; ILK1; Integrin-linked protein kinase
Product Type	Polyclonal Antibody
Immunogen Species	Homo sapiens (Human)
Target Names	ILK

Image



Western blot analysis of extracts from rat liver cells, using ILK (Ab-246) antibody.



Immunohistochemistry analysis of paraffin-embedded human brain tissue using ILK (Ab-246) antibody.