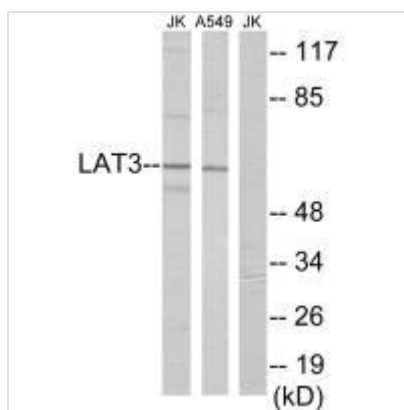




SLC43A1 Antibody

Product Code	CSB-PA065754
Storage	Upon receipt, store at -20°C or -80°C. Avoid repeated freeze.
Uniprot No.	O75387
Immunogen	Synthesized peptide derived from internal of Human LAT3.
Raised In	Rabbit
Species Reactivity	Human
Specificity	The antibody detects endogenous levels of total LAT3 protein.
Tested Applications	ELISA,WB;WB:1:500-1:3000
Form	Rabbit IgG in phosphate buffered saline (without Mg ²⁺ and Ca ²⁺), pH 7.4, 150mM NaCl, 0.02% sodium azide and 50% glycerol.
Purification Method	The antibody was affinity-purified from rabbit antiserum by affinity-chromatography using epitope-specific immunogen.
Clonality	Polyclonal
Alias	L-type amino acid transporter 3; LAT3; large neutral amino acids transporter small subunit 3; prostate cancer overexpressed gene 1 protein; solute carrier family 43 member 1
Product Type	Polyclonal Antibody
Immunogen Species	Homo sapiens (Human)
Target Names	SLC43A1

Image



Western blot analysis of extracts from Jurkat cells and A549 cells, using LAT3 antibody.

Usage For Research Use Only. Not for use in diagnostic or therapeutic procedures.