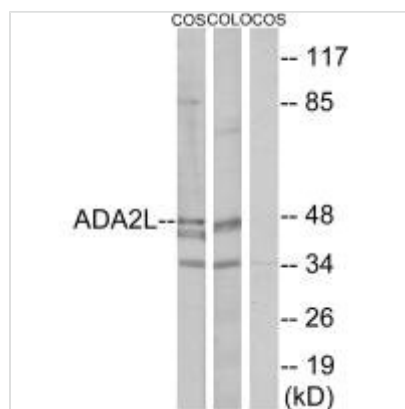




# TADA2A Antibody

<b>Product Code</b>	CSB-PA797557
<b>Storage</b>	Upon receipt, store at -20°C or -80°C. Avoid repeated freeze.
<b>Uniprot No.</b>	O75478
<b>Immunogen</b>	Synthesized peptide derived from internal of Human ADA2L.
<b>Raised In</b>	Rabbit
<b>Species Reactivity</b>	Human,Mouse,Rat
<b>Specificity</b>	The antibody detects endogenous levels of total ADA2L protein.
<b>Tested Applications</b>	ELISA,WB;WB:1:500-1:3000
<b>Form</b>	Rabbit IgG in phosphate buffered saline (without Mg <sup>2+</sup> and Ca <sup>2+</sup> ), pH 7.4, 150mM NaCl, 0.02% sodium azide and 50% glycerol.
<b>Purification Method</b>	The antibody was affinity-purified from rabbit antiserum by affinity-chromatography using epitope-specific immunogen.
<b>Clonality</b>	Polyclonal
<b>Alias</b>	Transcriptional adapter 2-like; ADA2-like protein; TADA2L; KL04P;
<b>Product Type</b>	Polyclonal Antibody
<b>Immunogen Species</b>	Homo sapiens (Human)
<b>Target Names</b>	TADA2A

## Image



Western blot analysis of extracts from COS-7 cells and COLO205 cells, using ADA2L antibody.

## Usage

For Research Use Only. Not for use in diagnostic or therapeutic procedures.