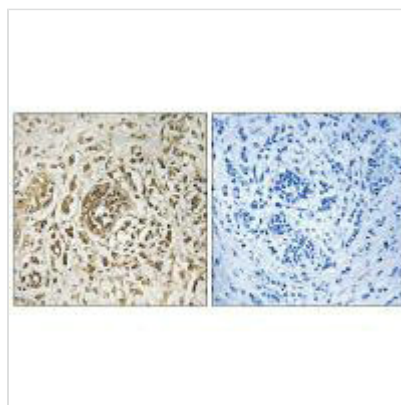




CIB2 Antibody

Product Code	CSB-PA089401
Storage	Upon receipt, store at -20°C or -80°C. Avoid repeated freeze.
Uniprot No.	O75838
Immunogen	Synthesized peptide derived from internal of Human CIB2.
Raised In	Rabbit
Species Reactivity	Human, Mouse
Specificity	The antibody detects endogenous levels of total CIB2 protein.
Tested Applications	ELISA, IHC; IHC: 1:50-1:100
Form	Rabbit IgG in phosphate buffered saline (without Mg ²⁺ and Ca ²⁺), pH 7.4, 150mM NaCl, 0.02% sodium azide and 50% glycerol.
Purification Method	The antibody was affinity-purified from rabbit antiserum by affinity-chromatography using epitope-specific immunogen.
Clonality	Polyclonal
Alias	Calcium and integrin-binding family member 2; Kinase-interacting protein 2; KIP 2; CIB2; KIP2
Product Type	Polyclonal Antibody
Immunogen Species	Homo sapiens (Human)
Target Names	CIB2

Image



Immunohistochemistry analysis of paraffin-embedded human breast carcinoma tissue, using CIB2 antibody.

Usage For Research Use Only. Not for use in diagnostic or therapeutic procedures.