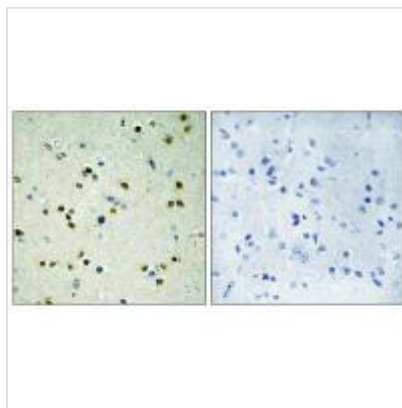




KDM4B Antibody

Product Code	CSB-PA042652
Storage	Upon receipt, store at -20°C or -80°C. Avoid repeated freeze.
Uniprot No.	O94953
Immunogen	Synthesized peptide derived from C-terminal of Human JHD3B.
Raised In	Rabbit
Species Reactivity	Human
Specificity	The antibody detects endogenous levels of total JHD3B protein.
Tested Applications	ELISA,IHC;IHC:1:50-1:100
Form	Rabbit IgG in phosphate buffered saline (without Mg ²⁺ and Ca ²⁺), pH 7.4, 150mM NaCl, 0.02% sodium azide and 50% glycerol.
Purification Method	The antibody was affinity-purified from rabbit antiserum by affinity-chromatography using epitope-specific immunogen.
Clonality	Polyclonal
Alias	EC 1.14.11.-; JMJ2B; Jumonji domain containing protein 2B;
Product Type	Polyclonal Antibody
Immunogen Species	Homo sapiens (Human)
Target Names	KDM4B

Image



Immunohistochemistry analysis of paraffin-embedded human brain tissue, using JHD3B antibody.