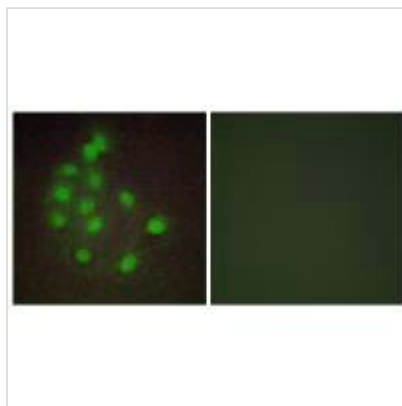




# HAND1 Antibody

<b>Product Code</b>	CSB-PA182098
<b>Storage</b>	Upon receipt, store at -20°C or -80°C. Avoid repeated freeze.
<b>Uniprot No.</b>	O96004
<b>Immunogen</b>	Synthesized peptide derived from internal of Human HAND1.
<b>Raised In</b>	Rabbit
<b>Species Reactivity</b>	Human,Mouse
<b>Specificity</b>	The antibody detects endogenous levels of total HAND1 protein.
<b>Tested Applications</b>	ELISA,IF;IF:1:100-1:500
<b>Form</b>	Rabbit IgG in phosphate buffered saline (without Mg <sup>2+</sup> and Ca <sup>2+</sup> ), pH 7.4, 150mM NaCl, 0.02% sodium azide and 50% glycerol.
<b>Purification Method</b>	The antibody was affinity-purified from rabbit antiserum by affinity-chromatography using epitope-specific immunogen.
<b>Clonality</b>	Polyclonal
<b>Alias</b>	Heart- and neural crest derivatives-expressed protein 1; Extraembryonic tissues; heart; autonomic nervous system and neural crest derivatives-expressed protein 1; eHAND
<b>Product Type</b>	Polyclonal Antibody
<b>Immunogen Species</b>	Homo sapiens (Human)
<b>Target Names</b>	HAND1

## Image



Immunofluorescence analysis of A549 cells, using HAND1 antibody.