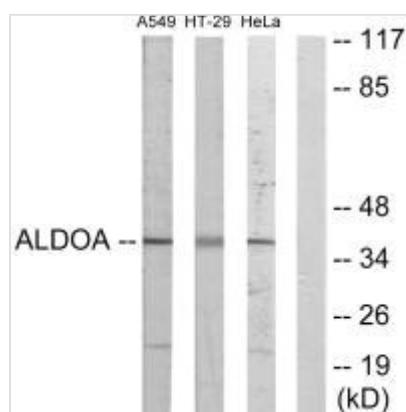




ALDOA Antibody

Product Code	CSB-PA114563
Storage	Upon receipt, store at -20°C or -80°C. Avoid repeated freeze.
Uniprot No.	P04075
Immunogen	Synthesized peptide derived from N-terminal of Human ALDOA.
Raised In	Rabbit
Species Reactivity	Human, Mouse, Rat
Specificity	The antibody detects endogenous levels of total ALDOA protein.
Tested Applications	ELISA, WB; WB: 1:500-1:3000
Form	Rabbit IgG in phosphate buffered saline (without Mg ²⁺ and Ca ²⁺), pH 7.4, 150mM NaCl, 0.02% sodium azide and 50% glycerol.
Purification Method	The antibody was affinity-purified from rabbit antiserum by affinity-chromatography using epitope-specific immunogen.
Clonality	Polyclonal
Alias	ALDA; ALDOA; ALFA; EC 4.1.2.13; Fructose-bisphosphate aldolase A
Product Type	Polyclonal Antibody
Immunogen Species	Homo sapiens (Human)
Target Names	ALDOA

Image



Western blot analysis of extracts from A549 cells, HT-29 cells and HeLa cells, using ALDOA antibody.

Usage

For Research Use Only. Not for use in diagnostic or therapeutic procedures.