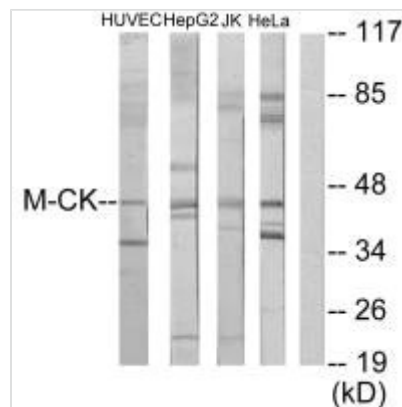




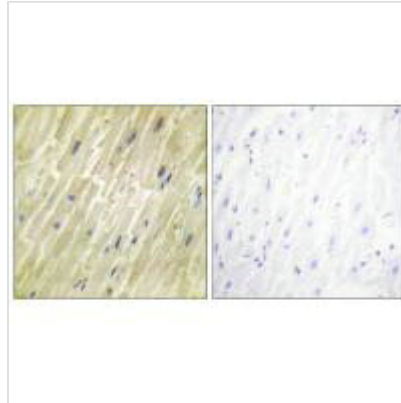
CKM Antibody

Product Code	CSB-PA041961
Storage	Upon receipt, store at -20°C or -80°C. Avoid repeated freeze.
Uniprot No.	P06732
Immunogen	Synthesized peptide derived from N-terminal of Human M-CK.
Raised In	Rabbit
Species Reactivity	Human,Mouse,Rat
Specificity	The antibody detects endogenous levels of total M-CK protein.
Tested Applications	ELISA,WB,IHC,IF;WB:1:500-1:3000,IHC:1:50-1:100,IF:1:100-1:500
Form	Rabbit IgG in phosphate buffered saline (without Mg ²⁺ and Ca ²⁺), pH 7.4, 150mM NaCl, 0.02% sodium azide and 50% glycerol.
Purification Method	The antibody was affinity-purified from rabbit antiserum by affinity-chromatography using epitope-specific immunogen.
Clonality	Polyclonal
Alias	CKM; CKMM.; EC 2.7.3.2; KCRM; creatine kinase
Product Type	Polyclonal Antibody
Immunogen Species	Homo sapiens (Human)
Target Names	CKM

Image



Western blot analysis of extracts from HUVEC cells, HepG2 cells, Jurkat cells and HeLa cells, using M-CK antibody.



Immunohistochemistry analysis of paraffin-embedded human heart tissue using M-CK antibody.



Immunofluorescence analysis of HepG2 cells, using M-CK antibody.