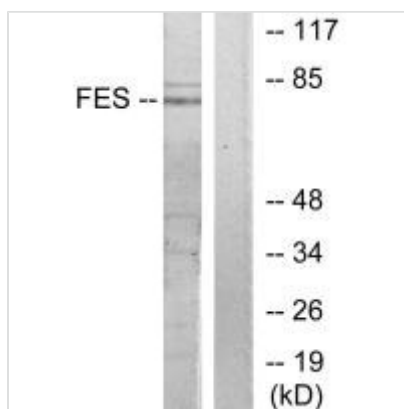




FES Antibody

Product Code	CSB-PA290275
Storage	Upon receipt, store at -20°C or -80°C. Avoid repeated freeze.
Uniprot No.	P07332
Immunogen	Synthesized peptide derived from internal of Human FES.
Raised In	Rabbit
Species Reactivity	Human, Mouse
Specificity	The antibody detects endogenous levels of total FES protein.
Tested Applications	ELISA, WB; WB: 1:500-1:3000
Form	Rabbit IgG in phosphate buffered saline (without Mg ²⁺ and Ca ²⁺), pH 7.4, 150mM NaCl, 0.02% sodium azide and 50% glycerol.
Purification Method	The antibody was affinity-purified from rabbit antiserum by affinity-chromatography using epitope-specific immunogen.
Clonality	Polyclonal
Alias	Proto-oncogene tyrosine-protein kinase Fes/Fps; EC 2.7.10.2; C-Fes; FES; FPS
Product Type	Polyclonal Antibody
Immunogen Species	Homo sapiens (Human)
Target Names	FES

Image



Western blot analysis of extracts from HUVEC cells, treated with serum (20%, 30mins), using FES antibody.

Usage

For Research Use Only. Not for use in diagnostic or therapeutic procedures.