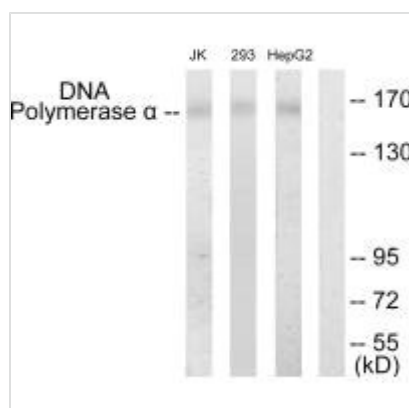




POLA1 Antibody

Product Code	CSB-PA156369
Storage	Upon receipt, store at -20°C or -80°C. Avoid repeated freeze.
Uniprot No.	P09884
Immunogen	Synthesized peptide derived from N-terminal of Human DNA Polymerase α .
Raised In	Rabbit
Species Reactivity	Human
Specificity	The antibody detects endogenous levels of total DNA Polymerase α protein.
Tested Applications	ELISA, WB; WB: 1:500-1:3000
Form	Rabbit IgG in phosphate buffered saline (without Mg ²⁺ and Ca ²⁺), pH 7.4, 150mM NaCl, 0.02% sodium azide and 50% glycerol.
Purification Method	The antibody was affinity-purified from rabbit antiserum by affinity-chromatography using epitope-specific immunogen.
Clonality	Polyclonal
Alias	DNA pol alpha; DNA polymerase alpha catalytic subunit; DPOA; DPOLA; EC 2.7.7.7
Product Type	Polyclonal Antibody
Immunogen Species	Homo sapiens (Human)
Target Names	POLA1

Image



Western blot analysis of extracts from Jurkat cells, 293 cells and HepG2 cells, using DNA Polymerase α antibody.

Usage For Research Use Only. Not for use in diagnostic or therapeutic procedures.