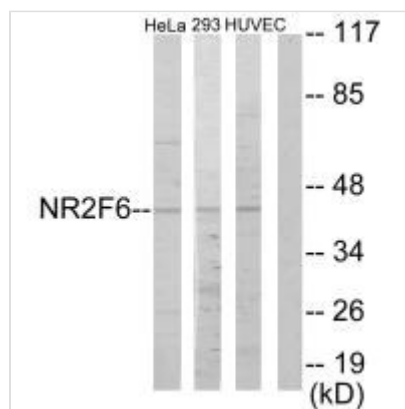




NR2F6 Antibody

Product Code	CSB-PA244735
Storage	Upon receipt, store at -20°C or -80°C. Avoid repeated freeze.
Uniprot No.	P10588
Immunogen	Synthesized peptide derived from N-terminal of Human NR2F6.
Raised In	Rabbit
Species Reactivity	Human,Mouse,Rat
Specificity	The antibody detects endogenous levels of total NR2F6 protein.
Tested Applications	ELISA,WB,IHC,IF;WB:1:500-1:3000,IHC:1:50-1:100,IF:1:100-1:500
Form	Rabbit IgG in phosphate buffered saline (without Mg ²⁺ and Ca ²⁺), pH 7.4, 150mM NaCl, 0.02% sodium azide and 50% glycerol.
Purification Method	The antibody was affinity-purified from rabbit antiserum by affinity-chromatography using epitope-specific immunogen.
Clonality	Polyclonal
Alias	EAR2; ERBAL2; NR2F6; Orphan nuclear receptor EAR-2; V-erbA related protein EAR-2
Product Type	Polyclonal Antibody
Immunogen Species	Homo sapiens (Human)
Target Names	NR2F6

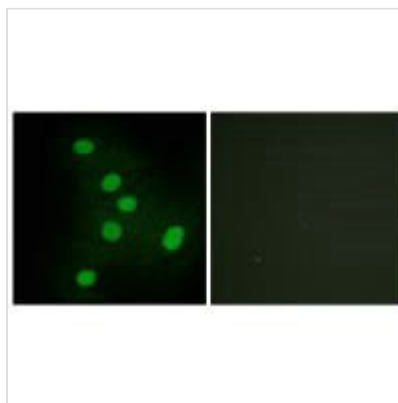
Image



Western blot analysis of extracts from HeLa cells, 293 cells and HUVEC cells, using NR2F6 antibody.



Immunohistochemistry analysis of paraffin-embedded human cervix carcinoma tissue using NR2F6 antibody.



Immunofluorescence analysis of HepG2 cells, using NR2F6 antibody.