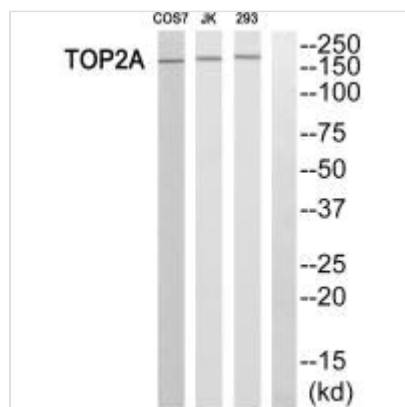




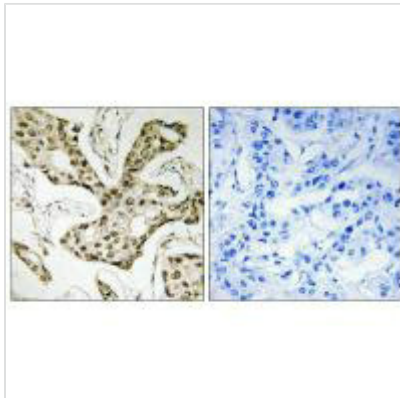
TOP2A Antibody

Product Code	CSB-PA105332
Storage	Upon receipt, store at -20°C or -80°C. Avoid repeated freeze.
Uniprot No.	P11388
Immunogen	Synthesized peptide derived from N-terminal of Human TOP2A.
Raised In	Rabbit
Species Reactivity	Human
Specificity	The antibody detects endogenous levels of total TOP2A protein.
Tested Applications	ELISA, WB, IHC, IF; WB:1:500-1:3000, IHC:1:50-1:100, IF:1:100-1:500
Form	Rabbit IgG in phosphate buffered saline (without Mg ²⁺ and Ca ²⁺), pH 7.4, 150mM NaCl, 0.02% sodium azide and 50% glycerol.
Purification Method	The antibody was affinity-purified from rabbit antiserum by affinity-chromatography using epitope-specific immunogen.
Clonality	Polyclonal
Alias	DNA topoisomerase 2-alpha; EC 5.99.1.3; DNA topoisomerase II; alpha isozyme; TOP2A
Product Type	Polyclonal Antibody
Immunogen Species	Homo sapiens (Human)
Target Names	TOP2A

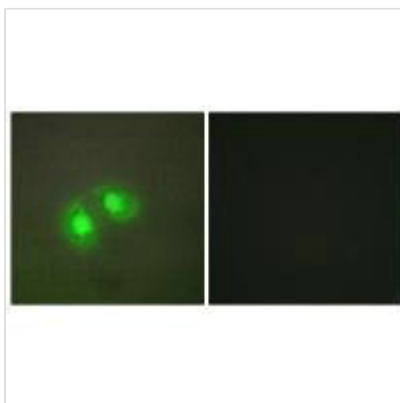
Image



Western blot analysis of extracts from HT-29 cells, using TOP2A antibody.



Immunohistochemistry analysis of paraffin-embedded human liver carcinoma tissue using TOP2A antibody.



Immunofluorescence analysis of A549 cells, using TOP2A antibody.