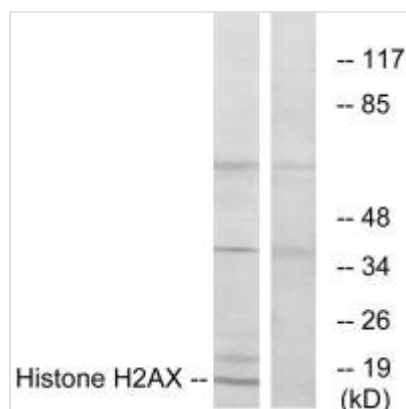




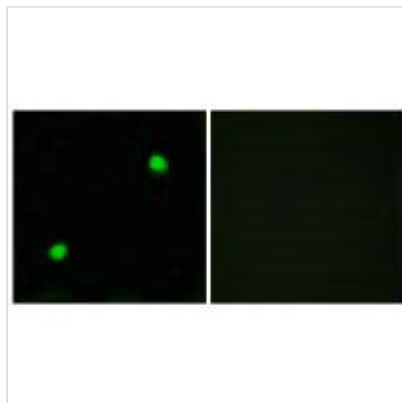
# Histone H2AX Antibody

<b>Product Code</b>	CSB-PA833019
<b>Storage</b>	Upon receipt, store at -20°C or -80°C. Avoid repeated freeze.
<b>Uniprot No.</b>	P16104
<b>Immunogen</b>	Synthesized peptide derived from internal of Human Histone H2AX.
<b>Raised In</b>	Rabbit
<b>Species Reactivity</b>	Human
<b>Specificity</b>	The antibody detects endogenous levels of total Histone H2AX protein.
<b>Tested Applications</b>	ELISA,WB,IF;WB:1:500-1:3000,IF:1:100-1:500
<b>Form</b>	Rabbit IgG in phosphate buffered saline (without Mg <sup>2+</sup> and Ca <sup>2+</sup> ), pH 7.4, 150mM NaCl, 0.02% sodium azide and 50% glycerol.
<b>Purification Method</b>	The antibody was affinity-purified from rabbit antiserum by affinity-chromatography using epitope-specific immunogen.
<b>Clonality</b>	Polyclonal
<b>Alias</b>	H2A.X; H2AFX; H2a/x; HIST5-2AX; Histone H2A.X
<b>Product Type</b>	Polyclonal Antibody
<b>Immunogen Species</b>	Homo sapiens (Human)
<b>Target Names</b>	H2AFX

## Image



Western blot analysis of extracts from HT-29 cells, using Histone H2AX antibody.



Immunofluorescence analysis of COS7 cells,  
using Histone H2AX antibody.