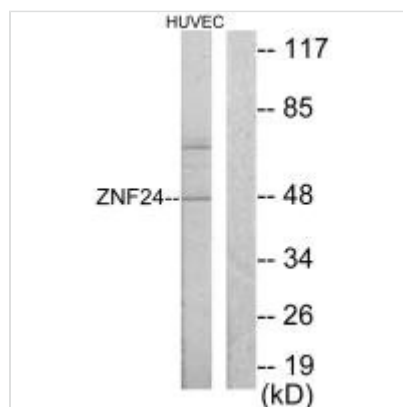




# ZNF24 Antibody

|                            |   |
|----------------------------|---|
| <b>Product Code</b>        | CSB-PA171336  |
| <b>Storage</b>             | Upon receipt, store at -20°C or -80°C. Avoid repeated freeze.   |
| <b>Uniprot No.</b>         | P17028  |
| <b>Immunogen</b>           | Synthesized peptide derived from N-terminal of Human ZNF24.   |
| <b>Raised In</b>           | Rabbit  |
| <b>Species Reactivity</b>  | Human, Mouse, Rat   |
| <b>Specificity</b>         | The antibody detects endogenous levels of total ZNF24 protein.  |
| <b>Tested Applications</b> | ELISA, WB; WB: 1:500-1:3000   |
| <b>Form</b>                | Rabbit IgG in phosphate buffered saline (without Mg <sup>2+</sup> and Ca <sup>2+</sup> ), pH 7.4, 150mM NaCl, 0.02% sodium azide and 50% glycerol.    |
| <b>Purification Method</b> | The antibody was affinity-purified from rabbit antiserum by affinity-chromatography using epitope-specific immunogen.                                 |
| <b>Clonality</b>           | Polyclonal  |
| <b>Alias</b>               | Zinc finger protein 18; Zinc finger protein KOX11; Heart development-specific gene 1 protein; Zinc finger protein with KRAB and SCAN domains 6; ZNF18 |
| <b>Product Type</b>        | Polyclonal Antibody   |
| <b>Immunogen Species</b>   | Homo sapiens (Human)  |
| <b>Target Names</b>        | ZNF24   |

## Image



Western blot analysis of extracts from HUVEC cells, using ZNF24 antibody.

**Usage** For Research Use Only. Not for use in diagnostic or therapeutic procedures.