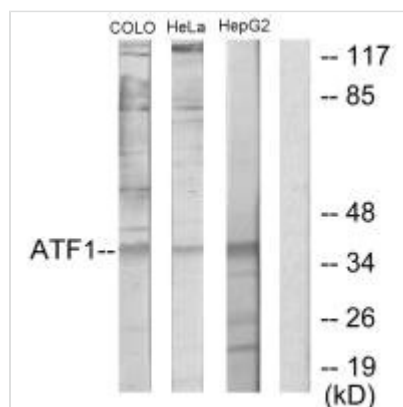




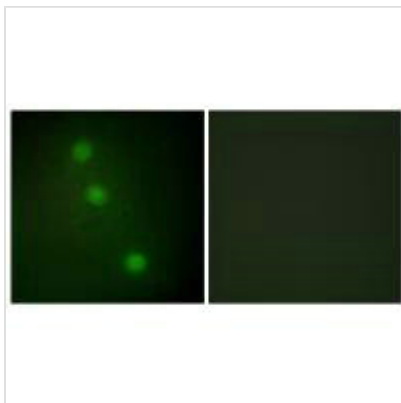
ATF1 Antibody

Product Code	CSB-PA968509
Storage	Upon receipt, store at -20°C or -80°C. Avoid repeated freeze.
Uniprot No.	P18846
Immunogen	Synthesized peptide derived from internal of Human ATF1.
Raised In	Rabbit
Species Reactivity	Human,Mouse,Rat
Specificity	The antibody detects endogenous levels of total ATF1 protein.
Tested Applications	ELISA,WB,IF;WB:1:500-1:3000,IF:1:100-1:500
Form	Rabbit IgG in phosphate buffered saline (without Mg ²⁺ and Ca ²⁺), pH 7.4, 150mM NaCl, 0.02% sodium azide and 50% glycerol.
Purification Method	The antibody was affinity-purified from rabbit antiserum by affinity-chromatography using epitope-specific immunogen.
Clonality	Polyclonal
Alias	ATF1; Activating transcription factor 1; Cyclic-AMP-dependent transcription factor ATF-1; TCR-ATF1; TREB36 protein
Product Type	Polyclonal Antibody
Immunogen Species	Homo sapiens (Human)
Target Names	ATF1

Image



Western blot analysis of extracts from COLO205 cells, HeLa cells and HepG2 cells, using ATF1 antibody.



Immunofluorescence analysis of HUVEC cells,
using ATF1 antibody.