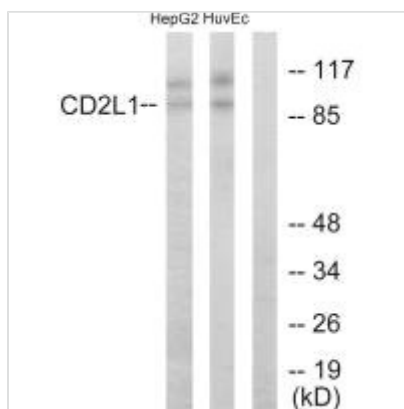




CDK11B Antibody

Product Code	CSB-PA093758
Storage	Upon receipt, store at -20°C or -80°C. Avoid repeated freeze.
Uniprot No.	P21127
Immunogen	Synthesized peptide derived from N-terminal of Human CD2L1.
Raised In	Rabbit
Species Reactivity	Human, Mouse
Specificity	The antibody detects endogenous levels of total CD2L1 protein.
Tested Applications	ELISA, WB; WB: 1:500-1:3000
Form	Rabbit IgG in phosphate buffered saline (without Mg ²⁺ and Ca ²⁺), pH 7.4, 150mM NaCl, 0.02% sodium azide and 50% glycerol.
Purification Method	The antibody was affinity-purified from rabbit antiserum by affinity-chromatography using epitope-specific immunogen.
Clonality	Polyclonal
Alias	CD2L1; CDC2L1; CDK11; CLK-1; Cell division cycle 2-like 1
Product Type	Polyclonal Antibody
Immunogen Species	Homo sapiens (Human)
Target Names	CDK11B

Image



Western blot analysis of extracts from HepG2 cells and HUVEC cells, using CD2L1 antibody.

Usage For Research Use Only. Not for use in diagnostic or therapeutic procedures.