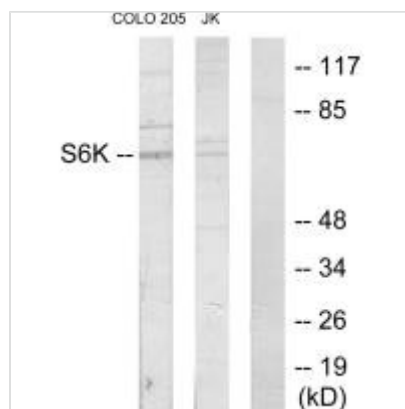




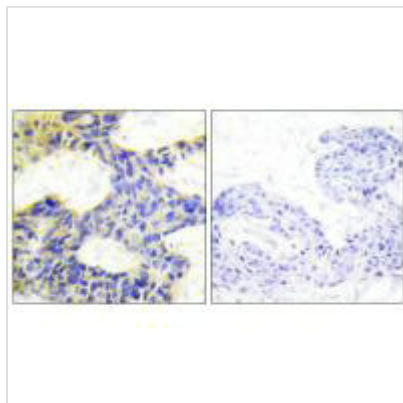
RPS6KB1 Antibody

Product Code	CSB-PA996769
Storage	Upon receipt, store at -20°C or -80°C. Avoid repeated freeze.
Uniprot No.	P23443
Immunogen	Synthesized peptide derived from internal of Human S6K.
Raised In	Rabbit
Species Reactivity	Human,Mouse,Rat
Specificity	The antibody detects endogenous levels of total S6K protein.
Tested Applications	ELISA,WB,IHC;WB:1:500-1:3000,IHC:1:50-1:100
Form	Rabbit IgG in phosphate buffered saline (without Mg ²⁺ and Ca ²⁺), pH 7.4, 150mM NaCl, 0.02% sodium azide and 50% glycerol.
Purification Method	The antibody was affinity-purified from rabbit antiserum by affinity-chromatography using epitope-specific immunogen.
Clonality	Polyclonal
Alias	EC 2.7.11.1; KS6B1; P70-S6K; RPS6KB1; Ribosomal protein S6 kinase
Product Type	Polyclonal Antibody
Immunogen Species	Homo sapiens (Human)
Target Names	RPS6KB1

Image



Western blot analysis of extracts from COLO205 cells and Jurkat cells, using S6K antibody.



Immunohistochemistry analysis of paraffin-embedded human breast carcinoma tissue using S6K antibody.

Usage

For Research Use Only. Not for use in diagnostic or therapeutic procedures.